

Product datasheet for **TA361400**

GLUR3 (GRIA3) Rabbit Polyclonal Antibody

Product data:

Product Type:	Primary Antibodies
Applications:	WB
Reactivity:	Human
Host:	Rabbit
Clonality:	Polyclonal
Immunogen:	The immunogen is a synthetic peptide directed towards the middle region of human GRIA3
Specificity:	Expected reactivity: Human
Formulation:	Liquid. Purified antibody supplied in 1x PBS buffer with 0.09% (w/v) sodium azide and 2% sucrose.
Concentration:	lot specific
Purification:	Affinity purified
Conjugation:	Unconjugated
Storage:	For short term use, store at 2-8°C up to 1 week. For long term storage, store at -20°C in small aliquots to prevent freeze-thaw cycles.
Stability:	Shelf life: one year from despatch.
Predicted Protein Size:	101 kDa
Gene Name:	glutamate ionotropic receptor AMPA type subunit 3
Database Link:	NP_000819.3 Entrez Gene 2892 Human P42263
Background:	Glutamate receptors are the predominant excitatory neurotransmitter receptors in the mammalian brain and are activated in a variety of normal neurophysiologic processes. These receptors are heteromeric protein complexes composed of multiple subunits, arranged to form ligand-gated ion channels. The classification of glutamate receptors is based on their activation by different pharmacologic agonists. The subunit encoded by this gene belongs to a family of AMPA (alpha-amino-3-hydroxy-5-methyl-4-isoxazole propionate)-sensitive glutamate receptors, and is subject to RNA editing (AGA->GGA; R->G). Alternative splicing at this locus results in different isoforms, which may vary in their signal transduction properties.



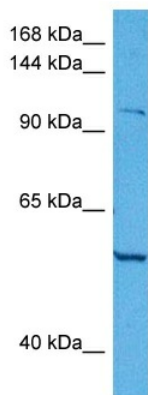
[View online >](#)

Synonyms: 2900064I19Rik; GluA3; GluR-3; Glur-3; GluR-C; GluR-K3; GLUR3; Glur3; Gluralpha3; mKIAA4184

Protein Families: Druggable Genome, Ion Channels: Glutamate Receptors, Transmembrane

Protein Pathways: Long-term depression, Neuroactive ligand-receptor interaction

Product images:



Host: Rabbit

Target Name: GRIA3

Sample Type: HepG2 Cell Lysate

Antibody Dilution: 1.0 μ g/ml

Host: Rabbit

Target Name: GRIA3

Sample Tissue: Human HepG2 Whole Cell lysates

Antibody Dilution: 1 μ g/ml