

Product datasheet for **TA361392**

HDJ2 (DNAJA1) Rabbit Polyclonal Antibody

Product data:

Product Type:	Primary Antibodies
Applications:	WB
Reactivity:	Human
Host:	Rabbit
Clonality:	Polyclonal
Immunogen:	The immunogen is a synthetic peptide directed towards the C terminal region of human DNAJA1
Specificity:	Expected reactivity: Human
Formulation:	Liquid. Purified antibody supplied in 1x PBS buffer with 0.09% (w/v) sodium azide and 2% sucrose. <i>Note that this product is shipped as lyophilized powder to China customers.</i>
Concentration:	lot specific
Purification:	Affinity purified
Conjugation:	Unconjugated
Storage:	For short term use, store at 2-8°C up to 1 week. For long term storage, store at -20°C in small aliquots to prevent freeze-thaw cycles.
Stability:	Shelf life: one year from despatch.
Predicted Protein Size:	45 kDa
Gene Name:	DnaJ heat shock protein family (Hsp40) member A1
Database Link:	NP_001530.1 Entrez Gene 3301 Human P31689



[View online »](#)

Background:

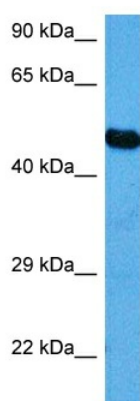
This gene encodes a member of the DnaJ family of proteins, which act as heat shock protein 70 cochaperones. Heat shock proteins facilitate protein folding, trafficking, prevention of aggregation, and proteolytic degradation. Members of this family are characterized by a highly conserved N-terminal J domain, a glycine/phenylalanine-rich region, four CxxCxGxG zinc finger repeats, and a C-terminal substrate-binding domain. The J domain mediates the interaction with heat shock protein 70 to recruit substrates and regulate ATP hydrolysis activity. In humans, this gene has been implicated in positive regulation of virus replication through co-option by the influenza A virus. Several pseudogenes of this gene are found on other chromosomes.

Synonyms:

DJ-2; DjA1; DNAJ2; hDJ-2; HDJ2; HSDJ; HSJ-2; HSJ2; HSPF4

Protein Families:

Druggable Genome

Product images:

Host: Rabbit
Target Name: DNAJA1
Sample Type: HepG2 Cell Lysate
Antibody Dilution: 1.0µg/ml

Host: Rabbit
Target Name: DNAJA1
Sample Tissue: Human HepG2 Whole Cell lysates
Antibody Dilution: 1 µg/ml