

Product datasheet for **TA361387**

Glutathione Transferase zeta 1 (GSTZ1) Rabbit Polyclonal Antibody

Product data:

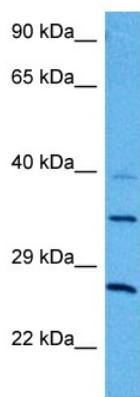
Product Type:	Primary Antibodies
Applications:	WB
Reactivity:	Human
Host:	Rabbit
Clonality:	Polyclonal
Immunogen:	The immunogen is a synthetic peptide directed towards the middle region of human GSTZ1
Specificity:	Expected reactivity: Human
Formulation:	Liquid. Purified antibody supplied in 1x PBS buffer with 0.09% (w/v) sodium azide and 2% sucrose. <i>Note that this product is shipped as lyophilized powder to China customers.</i>
Concentration:	lot specific
Purification:	Affinity purified
Conjugation:	Unconjugated
Storage:	For short term use, store at 2-8°C up to 1 week. For long term storage, store at -20°C in small aliquots to prevent freeze-thaw cycles.
Stability:	Shelf life: one year from despatch.
Predicted Protein Size:	23 kDa
Gene Name:	glutathione S-transferase zeta 1
Database Link:	NP_001504.2 Entrez Gene 2954 Human O43708
Background:	This gene is a member of the glutathione S-transferase (GSTs) super-family which encodes multifunctional enzymes important in the detoxification of electrophilic molecules, including carcinogens, mutagens, and several therapeutic drugs, by conjugation with glutathione. This enzyme catalyzes the conversion of maleylacetoacetate to fumarylacetoacetate, which is one of the steps in the phenylalanine/tyrosine degradation pathway. Deficiency of a similar gene in mouse causes oxidative stress. Several transcript variants of this gene encode multiple protein isoforms.



[View online »](#)

Synonyms: GSTZ1-1; MAAI; MAI; MGC2029

Product images:



Host: Rabbit
Target Name: GSTZ1
Sample Type: Neurofibroma Tumor Lysate
Antibody Dilution: 1.0 μ g/ml

Host: Rabbit
Target Name: GSTZ1
Sample Tissue: Human Neurofibroma Tumor lysates
Antibody Dilution: 1 μ g/ml