

Product datasheet for **TA361385**

EIF5B Rabbit Polyclonal Antibody

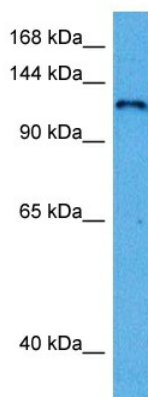
Product data:

Product Type:	Primary Antibodies
Applications:	WB
Reactivity:	Human
Host:	Rabbit
Clonality:	Polyclonal
Immunogen:	The immunogen is a synthetic peptide directed towards the middle region of human EIF5B
Specificity:	Expected reactivity: Human
Formulation:	Liquid. Purified antibody supplied in 1x PBS buffer with 0.09% (w/v) sodium azide and 2% sucrose.
Concentration:	lot specific
Purification:	Affinity purified
Conjugation:	Unconjugated
Storage:	For short term use, store at 2-8°C up to 1 week. For long term storage, store at -20°C in small aliquots to prevent freeze-thaw cycles.
Stability:	Shelf life: one year from despatch.
Predicted Protein Size:	134 kDa
Gene Name:	eukaryotic translation initiation factor 5B
Database Link:	NP_056988.3 Entrez Gene 9669 Human O60841
Background:	Accurate initiation of translation in eukaryotes is complex and requires many factors, some of which are composed of multiple subunits. The process is simpler in prokaryotes which have only three initiation factors (IF1, IF2, IF3). Two of these factors are conserved in eukaryotes: the homolog of IF1 is eIF1A and the homolog of IF2 is eIF5B. This gene encodes eIF5B. Factors eIF1A and eIF5B interact on the ribosome along with other initiation factors and GTP to position the initiation methionine tRNA on the start codon of the mRNA so that translation initiates accurately.
Synonyms:	DKFZp434I036; eIF-5B; FLJ10524; IF2; KIAA0741



[View online »](#)

Product images:



Host: Rabbit
Target Name: EIF5B
Sample Type: DLD1 Cell Lysate
Antibody Dilution: 1.0µg/ml

Host: Rabbit
Target Name: EIF5B
Sample Tissue: Human DLD1 Whole Cell lysates
Antibody Dilution: 1ug/ml