

## Product datasheet for **TA361383**

### TEM1 (CD248) Rabbit Polyclonal Antibody

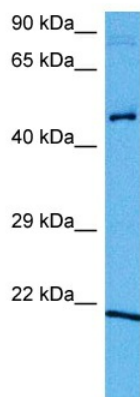
#### Product data:

Product Type:	Primary Antibodies
Applications:	WB
Reactivity:	Human
Host:	Rabbit
Clonality:	Polyclonal
Immunogen:	The immunogen is a synthetic peptide directed towards the middle region of human CD248
Specificity:	<b>Expected reactivity:</b> Human
Formulation:	Liquid. Purified antibody supplied in 1x PBS buffer with 0.09% (w/v) sodium azide and 2% sucrose. <i>Note that this product is shipped as lyophilized powder to China customers.</i>
Concentration:	lot specific
Purification:	Affinity purified
Conjugation:	Unconjugated
Storage:	For short term use, store at 2-8°C up to 1 week. For long term storage, store at -20°C in small aliquots to prevent freeze-thaw cycles.
Stability:	Shelf life: one year from despatch.
Predicted Protein Size:	47 kDa
Gene Name:	CD248 molecule
Database Link:	<a href="#">NP_065137.1</a> <a href="#">Entrez Gene 57124 Human</a> <a href="#">Q9HCU0-2</a>
Background:	May play a role in tumor angiogenesis.
Synonyms:	2610111G01Rik; CD164L1; endosialin; MGC119478; MGC119479; TEM1
Protein Families:	Druggable Genome, Transmembrane



[View online »](#)

## Product images:



Host: Rabbit

Target Name: CD248

Sample Type: Leiomyosarcoma Tumor Lysate

Antibody Dilution: 1.0 $\mu$ g/ml

Host: Rabbit

Target Name: CD248

Sample Tissue: Human Leiomyosarcoma Tumor lysates

Antibody Dilution: 1  $\mu$ g/ml