

## Product datasheet for **TA361380**

### EDIL3 Rabbit Polyclonal Antibody

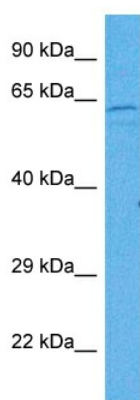
#### Product data:

Product Type:	Primary Antibodies
Applications:	WB
Reactivity:	Human
Host:	Rabbit
Clonality:	Polyclonal
Immunogen:	The immunogen is a synthetic peptide directed towards the C terminal region of human EDIL3
Specificity:	<b>Expected reactivity:</b> Human
Formulation:	Liquid. Purified antibody supplied in 1x PBS buffer with 0.09% (w/v) sodium azide and 2% sucrose. <i>Note that this product is shipped as lyophilized powder to China customers.</i>
Concentration:	lot specific
Purification:	Affinity purified
Conjugation:	Unconjugated
Storage:	For short term use, store at 2-8°C up to 1 week. For long term storage, store at -20°C in small aliquots to prevent freeze-thaw cycles.
Stability:	Shelf life: one year from despatch.
Predicted Protein Size:	54 kDa
Gene Name:	EGF like repeats and discoïdin domains 3
Database Link:	<a href="#">NP_001265571.1</a> <a href="#">Entrez Gene 10085 Human</a> <a href="#">O43854</a>
Background:	The protein encoded by this gene is an integrin ligand. It plays an important role in mediating angiogenesis and may be important in vessel wall remodeling and development. It also influences endothelial cell behavior.
Synonyms:	DEL1; MGC26287
Protein Families:	Druggable Genome, Secreted Protein



[View online »](#)

## Product images:



Host: Rabbit  
Target Name: EDIL3  
Sample Type: 786-0 Cell Lysate  
Antibody Dilution: 1.0 $\mu$ g/ml

Host: Rabbit  
Target Name: EDIL3  
Sample Tissue: Human 786-0 Whole Cell lysates  
Antibody Dilution: 1 $\mu$ g/ml