

Product datasheet for **TA361374**

RPGRIP1L Rabbit Polyclonal Antibody

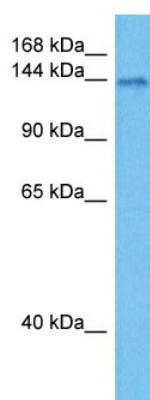
Product data:

Product Type:	Primary Antibodies
Applications:	WB
Reactivity:	Human
Host:	Rabbit
Clonality:	Polyclonal
Immunogen:	The immunogen is a synthetic peptide directed towards the middle terminal region of human RPGRIP1L
Specificity:	Expected reactivity: Human
Formulation:	Liquid. Purified antibody supplied in 1x PBS buffer with 0.09% (w/v) sodium azide and 2% sucrose. <i>Note that this product is shipped as lyophilized powder to China customers.</i>
Concentration:	lot specific
Purification:	Affinity purified
Conjugation:	Unconjugated
Storage:	For short term use, store at 2-8°C up to 1 week. For long term storage, store at -20°C in small aliquots to prevent freeze-thaw cycles.
Stability:	Shelf life: one year from despatch.
Predicted Protein Size:	144 kDa
Gene Name:	RPGRIP1 like
Database Link:	NP_001121369.1 Entrez Gene 23322 Human Q68CZ1
Background:	The protein encoded by this gene can localize to the basal body-centrosome complex or to primary cilia and centrosomes in ciliated cells. The encoded protein has been found to interact with nephrocystin-4. Defects in this gene are a cause of Joubert syndrome type 7 (JBTS7) and Meckel syndrome type 5 (MKS5). Two transcript variants encoding different isoforms have been found for this gene.
Synonyms:	CORS3; DKFZp686C0668; FTM; JBTS7; KIAA1005; MKS5; NPHP8; RPGRIP1-like



[View online >](#)

Product images:



Host: Rabbit
Target Name: RPGRIP1L
Sample Type: LN18 Cell Lysate
Antibody Dilution: 1.0 μ g/ml

Host: Rabbit
Target Name: RPGRIP1L
Sample Tissue: Human LN18 Whole Cell lysates
Antibody Dilution: 1 μ g/ml