

## Product datasheet for **TA361372**

### SLC36A1 Rabbit Polyclonal Antibody

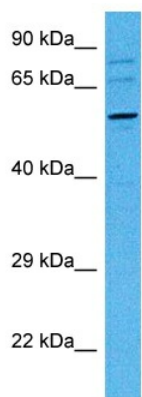
#### Product data:

Product Type:	Primary Antibodies
Applications:	WB
Reactivity:	Human
Host:	Rabbit
Clonality:	Polyclonal
Immunogen:	The immunogen is a synthetic peptide directed towards the N terminal region of human SLC36A1
Specificity:	<b>Expected reactivity:</b> Human
Formulation:	Liquid. Purified antibody supplied in 1x PBS buffer with 0.09% (w/v) sodium azide and 2% sucrose.
Concentration:	lot specific
Purification:	Affinity purified
Conjugation:	Unconjugated
Storage:	For short term use, store at 2-8°C up to 1 week. For long term storage, store at -20°C in small aliquots to prevent freeze-thaw cycles.
Stability:	Shelf life: one year from despatch.
Predicted Protein Size:	52 kDa
Gene Name:	solute carrier family 36 member 1
Database Link:	<a href="#">NP_510968.2</a> <a href="#">Entrez Gene 206358 Human</a> <a href="#">Q7Z2H8</a>
Background:	This gene encodes a member of the eukaryote-specific amino acid/auxin permease (AAP) 1 transporter family. The encoded protein functions as a proton-dependent, small amino acid transporter. This gene is clustered with related family members on chromosome 5q33.1. Alternative splicing results in multiple transcript variants.
Synonyms:	hPAT1; LYAAT-1; LYAAT1; PAT1; TRAMD3



[View online »](#)

## Product images:



Host: Rabbit  
Target Name: SLC36A1  
Sample Type: 786-0 Cell Lysate  
Antibody Dilution: 1.0 $\mu$ g/ml

Host: Rabbit  
Target Name: SLC36A1  
Sample Tissue: Human 786-0 Whole Cell lysates  
Antibody Dilution: 1  $\mu$ g/ml