

Product datasheet for **TA361364**

SLCO2A1 Rabbit Polyclonal Antibody

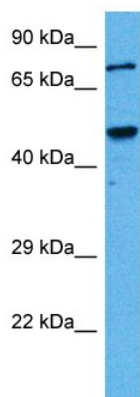
Product data:

Product Type:	Primary Antibodies
Applications:	WB
Reactivity:	Human
Host:	Rabbit
Clonality:	Polyclonal
Immunogen:	The immunogen is a synthetic peptide directed towards the N terminal region of human SLCO2A1
Specificity:	Expected reactivity: Human
Formulation:	Liquid. Purified antibody supplied in 1x PBS buffer with 0.09% (w/v) sodium azide and 2% sucrose.
Concentration:	lot specific
Purification:	Affinity purified
Conjugation:	Unconjugated
Storage:	For short term use, store at 2-8°C up to 1 week. For long term storage, store at -20°C in small aliquots to prevent freeze-thaw cycles.
Stability:	Shelf life: one year from despatch.
Predicted Protein Size:	70 kDa
Gene Name:	solute carrier organic anion transporter family member 2A1
Database Link:	NP_005621.2 Entrez Gene 6578 Human Q92959
Background:	This gene encodes a prostaglandin transporter that is a member of the 12-membrane-spanning superfamily of transporters. The encoded protein may be involved in mediating the uptake and clearance of prostaglandins in numerous tissues.
Synonyms:	OATP2A1; PGT; SLC21A2
Protein Families:	Transmembrane



[View online »](#)

Product images:



Host: Rabbit
Target Name: SLCO2A1
Sample Type: U937 Cell Lysate
Antibody Dilution: 1.0µg/ml

Host: Rabbit
Target Name: SLCO2A1
Sample Tissue: Human U937 Whole Cell lysates
Antibody Dilution: 1ug/ml