

## Product datasheet for **TA361362**

### **NAGLU Rabbit Polyclonal Antibody**

#### **Product data:**

Product Type:	Primary Antibodies
Applications:	WB
Reactivity:	Human
Host:	Rabbit
Clonality:	Polyclonal
Immunogen:	The immunogen is a synthetic peptide directed towards the C terminal region of human NAGLU
Specificity:	<b>Expected reactivity:</b> Human
Formulation:	Liquid. Purified antibody supplied in 1x PBS buffer with 0.09% (w/v) sodium azide and 2% sucrose. <i>Note that this product is shipped as lyophilized powder to China customers.</i>
Concentration:	lot specific
Purification:	Affinity purified
Conjugation:	Unconjugated
Storage:	For short term use, store at 2-8°C up to 1 week. For long term storage, store at -20°C in small aliquots to prevent freeze-thaw cycles.
Stability:	Shelf life: one year from despatch.
Predicted Protein Size:	70 kDa
Gene Name:	N-acetyl-alpha-glucosaminidase
Database Link:	<a href="#">NP_000254.2</a> <a href="#">Entrez Gene 4669 Human</a> <a href="#">P54802</a>
Background:	This gene encodes an enzyme that degrades heparan sulfate by hydrolysis of terminal N-acetyl-D-glucosamine residues in N-acetyl-alpha-D-glucosaminides. Defects in this gene are the cause of mucopolysaccharidosis type IIIB (MPS-IIIB), also known as Sanfilippo syndrome B. This disease is characterized by the lysosomal accumulation and urinary excretion of heparan sulfate.



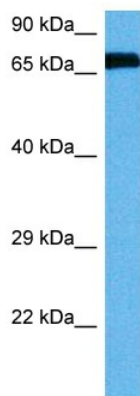
[View online »](#)

**Synonyms:** alpha-N-acetylglucosaminidase; MPS-IIIB; MPS3B; N-acetyl-alpha-glucosaminidase; NAG; UFHSD; UFHSD1

**Protein Families:** Druggable Genome

**Protein Pathways:** Glycosaminoglycan degradation, Lysosome, Metabolic pathways

### Product images:



Host: Rabbit  
Target Name: NAGLU  
Sample Type: Lung Tumor Lysate  
Antibody Dilution: 1.0 $\mu$ g/ml

Host: Rabbit  
Target Name: NAGLU  
Sample Tissue: Human Lung Tumor lysates  
Antibody Dilution: 1 $\mu$ g/ml