

## Product datasheet for **TA361360**

### GLEPP1 (PTPRO) Rabbit Polyclonal Antibody

#### Product data:

Product Type:	Primary Antibodies
Applications:	WB
Reactivity:	Human
Host:	Rabbit
Clonality:	Polyclonal
Immunogen:	The immunogen is a synthetic peptide directed towards the middle region of human PTPRO
Specificity:	<b>Expected reactivity:</b> Human
Formulation:	Liquid. Purified antibody supplied in 1x PBS buffer with 0.09% (w/v) sodium azide and 2% sucrose. <i>Note that this product is shipped as lyophilized powder to China customers.</i>
Concentration:	lot specific
Purification:	Affinity purified
Conjugation:	Unconjugated
Storage:	For short term use, store at 2-8°C up to 1 week. For long term storage, store at -20°C in small aliquots to prevent freeze-thaw cycles.
Stability:	Shelf life: one year from despatch.
Predicted Protein Size:	65 kDa
Gene Name:	protein tyrosine phosphatase, receptor type O
Database Link:	<a href="#">NP_002839.1</a> <a href="#">Entrez Gene 5800 Human</a> <a href="#">Q16827-5</a>



[View online »](#)

**Background:**

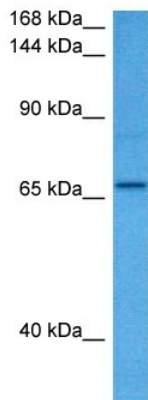
This gene encodes a member of the R3 subtype family of receptor-type protein tyrosine phosphatases. These proteins are localized to the apical surface of polarized cells and may have tissue-specific functions through activation of Src family kinases. This gene contains two distinct promoters, and alternatively spliced transcript variants encoding multiple isoforms have been observed. The encoded proteins may have multiple isoform-specific and tissue-specific functions, including the regulation of osteoclast production and activity, inhibition of cell proliferation and facilitation of apoptosis. This gene is a candidate tumor suppressor, and decreased expression of this gene has been observed in several types of cancer.

**Synonyms:**

GLEPP1; PTP-oc; PTP-U2; PTPROT; PTPU2

**Protein Families:**

Phosphatase, Transmembrane

**Product images:**

Host: Rabbit  
Target Name: PTPRO  
Sample Type: HT1080 Cell Lysate  
Antibody Dilution: 1.0µg/ml

Host: Rabbit  
Target Name: PTPRO  
Sample Tissue: Human HT1080 Whole Cell lysates  
Antibody Dilution: 1ug/ml