

Product datasheet for **TA361358**

ABCB6 Rabbit Polyclonal Antibody

Product data:

Product Type:	Primary Antibodies
Applications:	WB
Reactivity:	Human
Host:	Rabbit
Clonality:	Polyclonal
Immunogen:	The immunogen is a synthetic peptide directed towards the C terminal region of human ABCB6
Specificity:	Expected reactivity: Human
Formulation:	Liquid. Purified antibody supplied in 1x PBS buffer with 0.09% (w/v) sodium azide and 2% sucrose. <i>Note that this product is shipped as lyophilized powder to China customers.</i>
Concentration:	lot specific
Purification:	Affinity purified
Conjugation:	Unconjugated
Storage:	For short term use, store at 2-8°C up to 1 week. For long term storage, store at -20°C in small aliquots to prevent freeze-thaw cycles.
Stability:	Shelf life: one year from despatch.
Predicted Protein Size:	87 kDa
Gene Name:	ATP binding cassette subfamily B member 6 (Langereis blood group)
Database Link:	NP_005680.1 Entrez Gene 10058 Human Q9NP58-4



[View online »](#)

Background:

The membrane-associated protein encoded by this gene is a member of the superfamily of ATP-binding cassette (ABC) transporters. ABC proteins transport various molecules across extra- and intra-cellular membranes. ABC genes are divided into seven distinct subfamilies (ABC1, MDR/TAP, MRP, ALD, OABP, GCN20, White). This protein is a member of the MDR/TAP subfamily. Members of the MDR/TAP subfamily are involved in multidrug resistance as well as antigen presentation. This half-transporter likely plays a role in mitochondrial function. Localized to 2q26, this gene is considered a candidate gene for lethal neonatal metabolic syndrome, a disorder of mitochondrial function.

Synonyms:

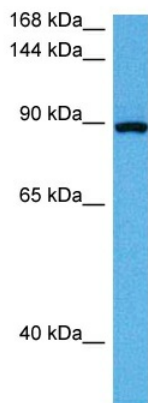
ABC; ABC14; EST45597; FLJ22414; MTABC3; PRP; umat

Protein Families:

Druggable Genome, Transmembrane

Protein Pathways:

ABC transporters

Product images:

Host: Rabbit
Target Name: ABCB6
Sample Type: HeLa Cell Lysate
Antibody Dilution: 1.0µg/ml

Host: Rabbit
Target Name: ABCB6
Sample Tissue: Human HeLa Whole Cell lysates
Antibody Dilution: 1 ug/ml