

Product datasheet for **TA361352**

KSR1 Rabbit Polyclonal Antibody

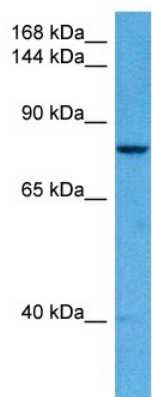
Product data:

Product Type:	Primary Antibodies
Applications:	WB
Reactivity:	Human
Host:	Rabbit
Clonality:	Polyclonal
Immunogen:	The immunogen is a synthetic peptide directed towards the middle region of human KSR1
Specificity:	Expected reactivity: Human
Formulation:	Liquid. Purified antibody supplied in 1x PBS buffer with 0.09% (w/v) sodium azide and 2% sucrose. <i>Note that this product is shipped as lyophilized powder to China customers.</i>
Concentration:	lot specific
Purification:	Affinity purified
Conjugation:	Unconjugated
Storage:	For short term use, store at 2-8°C up to 1 week. For long term storage, store at -20°C in small aliquots to prevent freeze-thaw cycles.
Stability:	Shelf life: one year from despatch.
Predicted Protein Size:	83 kDa
Gene Name:	kinase suppressor of ras 1
Database Link:	NP_055053.1 Entrez Gene 8844 Human Q8IVT5-4
Background:	Scaffolding protein that is part of a multiprotein signaling complex. Promotes phosphorylation of Raf family members and activation of downstream MAP kinases. Promotes activation of MAPK1 and/or MAPK3, both in response to EGF and to cAMP. Does not have kinase activity by itself.
Synonyms:	KSR; RSU2
Protein Families:	Druggable Genome, Protein Kinase



[View online »](#)

Product images:



Host: Rabbit
Target Name: KSR1
Sample Type: NeurofibromaTumor Lysate
Antibody Dilution: 1.0 μ g/ml

Host: Rabbit
Target Name: KSR1
Sample Tissue: Human Neurofibroma Tumor lysates
Antibody Dilution: 1 μ g/ml