

## Product datasheet for **TA361349**

### NDE1 Rabbit Polyclonal Antibody

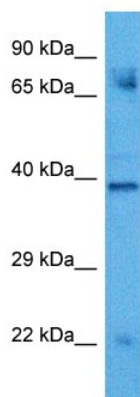
#### Product data:

Product Type:	Primary Antibodies
Applications:	WB
Reactivity:	Human
Host:	Rabbit
Clonality:	Polyclonal
Immunogen:	The immunogen is a synthetic peptide directed towards the middle region of human NDE1
Specificity:	<b>Expected reactivity:</b> Human
Formulation:	Liquid. Purified antibody supplied in 1x PBS buffer with 0.09% (w/v) sodium azide and 2% sucrose.
Concentration:	lot specific
Purification:	Affinity purified
Conjugation:	Unconjugated
Storage:	For short term use, store at 2-8°C up to 1 week. For long term storage, store at -20°C in small aliquots to prevent freeze-thaw cycles.
Stability:	Shelf life: one year from despatch.
Predicted Protein Size:	38 kDa
Gene Name:	nudE neurodevelopment protein 1
Database Link:	<a href="#">NP_001137451.1</a> <a href="#">Entrez Gene 54820 Human</a> <a href="#">Q9NXR1</a>
Background:	This gene encodes a member of the nuclear distribution E (NudE) family of proteins. The encoded protein is localized at the centrosome and interacts with other centrosome components as part of a multiprotein complex that regulates dynein function. This protein plays an essential role in microtubule organization, mitosis and neuronal migration. Mutations in this gene cause lissencephaly 4, a disorder characterized by lissencephaly, severe brain atrophy, microcephaly, and severe mental retardation. Alternative splicing results in multiple transcript variants.
Synonyms:	FLJ20101; HOM-TES-87; NUDE; NUDE1; OTTHUMP00000160329



[View online »](#)

## Product images:



Host: Rabbit  
Target Name: NDE1  
Sample Type: NCI-H226 Cell Lysate  
Antibody Dilution: 1.0 $\mu$ g/ml

Host: Rabbit  
Target Name: NDE1  
Sample Tissue: Human NCI-H226 Whole Cell  
lysates  
Antibody Dilution: 1  $\mu$ g/ml