

## Product datasheet for **TA361343**

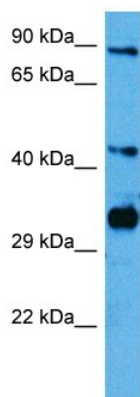
### FSTL1 Rabbit Polyclonal Antibody

#### Product data:

Product Type:	Primary Antibodies
Applications:	WB
Reactivity:	Human
Host:	Rabbit
Clonality:	Polyclonal
Immunogen:	The immunogen is a synthetic peptide directed towards the middle region of human FSTL1
Specificity:	<b>Expected reactivity:</b> Human
Formulation:	Liquid. Purified antibody supplied in 1x PBS buffer with 0.09% (w/v) sodium azide and 2% sucrose. <i>Note that this product is shipped as lyophilized powder to China customers.</i>
Concentration:	lot specific
Purification:	Affinity purified
Conjugation:	Unconjugated
Storage:	For short term use, store at 2-8°C up to 1 week. For long term storage, store at -20°C in small aliquots to prevent freeze-thaw cycles.
Stability:	Shelf life: one year from despatch.
Predicted Protein Size:	33 kDa
Gene Name:	follistatin like 1
Database Link:	<a href="#">NP_009016.1</a> <a href="#">Entrez Gene 11167 Human</a> <a href="#">Q12841</a>
Background:	This gene encodes a protein with similarity to follistatin, an activin-binding protein. It contains an FS module, a follistatin-like sequence containing 10 conserved cysteine residues. This gene product is thought to be an autoantigen associated with rheumatoid arthritis.
Synonyms:	FLJ50214; FLJ52277; FRP; FSL1
Protein Families:	Secreted Protein



[View online »](#)

**Product images:**

Host: Rabbit  
Target Name: FSTL1  
Sample Type: HepG2 Cell Lysate  
Antibody Dilution: 1.0 $\mu$ g/ml

Host: Rabbit  
Target Name: FSTL1  
Sample Tissue: Human HepG2 Whole Cell lysates  
Antibody Dilution: 1 $\mu$ g/ml