

## Product datasheet for **TA361337**

### **C14orf151 (INF2) Rabbit Polyclonal Antibody**

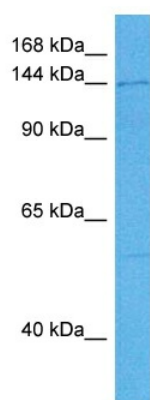
#### **Product data:**

Product Type:	Primary Antibodies
Applications:	WB
Reactivity:	Human
Host:	Rabbit
Clonality:	Polyclonal
Immunogen:	The immunogen is a synthetic peptide directed towards the middle region of human INF2
Specificity:	<b>Expected reactivity:</b> Human
Formulation:	Liquid. Purified antibody supplied in 1x PBS buffer with 0.09% (w/v) sodium azide and 2% sucrose. <i>Note that this product is shipped as lyophilized powder to China customers.</i>
Concentration:	lot specific
Purification:	Affinity purified
Conjugation:	Unconjugated
Storage:	For short term use, store at 2-8°C up to 1 week. For long term storage, store at -20°C in small aliquots to prevent freeze-thaw cycles.
Stability:	Shelf life: one year from despatch.
Predicted Protein Size:	137 kDa
Gene Name:	inverted formin, FH2 and WH2 domain containing
Database Link:	<a href="#">NP_001026884.3</a> <a href="#">Entrez Gene 64423 Human</a> <a href="#">Q27J81</a>
Background:	This gene represents a member of the formin family of proteins. It is considered a diaphanous formin due to the presence of a diaphanous inhibitory domain located at the N-terminus of the encoded protein. Studies of a similar mouse protein indicate that the protein encoded by this locus may function in polymerization and depolymerization of actin filaments. Mutations at this locus have been associated with focal segmental glomerulosclerosis 5.
Synonyms:	C14orf151; C14orf173; DKFZp762A0214; FLJ22056; MGC13251; pp9484



[View online »](#)

## Product images:



Host: Rabbit  
Target Name: INF2  
Sample Type: THP-1 Cell Lysate  
Antibody Dilution: 1.0 $\mu$ g/ml

Host: Rabbit  
Target Name: INF2  
Sample Tissue: Human THP-1 Whole Cell lysates  
Antibody Dilution: 1  $\mu$ g/ml