

Product datasheet for **TA361333**

TCP1 alpha (TCP1) Rabbit Polyclonal Antibody

Product data:

Product Type:	Primary Antibodies
Applications:	WB
Reactivity:	Human, Mouse
Host:	Rabbit
Clonality:	Polyclonal
Immunogen:	The immunogen is a synthetic peptide directed towards the C terminal region of human TCP1
Specificity:	Expected reactivity: Human
Formulation:	Liquid. Purified antibody supplied in 1x PBS buffer with 0.09% (w/v) sodium azide and 2% sucrose. <i>Note that this product is shipped as lyophilized powder to China customers.</i>
Concentration:	lot specific
Purification:	Affinity purified
Conjugation:	Unconjugated
Storage:	For short term use, store at 2-8°C up to 1 week. For long term storage, store at -20°C in small aliquots to prevent freeze-thaw cycles.
Stability:	Shelf life: one year from despatch.
Predicted Protein Size:	61 kDa
Gene Name:	t-complex 1
Database Link:	NP_110379.2 Entrez Gene 21454 Mouse Entrez Gene 6950 Human P17987



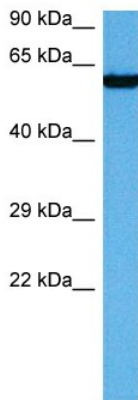
[View online »](#)

Background:

The protein encoded by this gene is a molecular chaperone that is a member of the chaperonin containing TCP1 complex (CCT), also known as the TCP1 ring complex (TRiC). This complex consists of two identical stacked rings, each containing eight different proteins. Unfolded polypeptides enter the central cavity of the complex and are folded in an ATP-dependent manner. The complex folds various proteins, including actin and tubulin. Alternate transcriptional splice variants of this gene, encoding different isoforms, have been characterized. In addition, three pseudogenes that appear to be derived from this gene have been found.

Synonyms:

CCT-alpha; CCT1; CCTa; D6S230E; TCP-1-alpha

Product images:


Host: Rabbit
 Target Name: TCP1
 Sample Type: Jurkat Cell Lysate
 Antibody Dilution: 1.0µg/ml

Host: Rabbit
 Target Name: TCP1
 Sample Tissue: Human Jurkat Whole Cell lysates
 Antibody Dilution: 1ug/ml



Host: Rabbit
 Target Name: Tcp1
 Sample Type: Mouse Brain Lysate
 Antibody Dilution: 1.0µg/ml

Host: Mouse
 Target Name: TCP1
 Sample Tissue: Mouse Brain
 Antibody Dilution: 1ug/ml