

## Product datasheet for **TA361330**

### MC5R Rabbit Polyclonal Antibody

#### Product data:

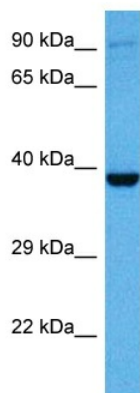
|                         |   |
|-------------------------|---|
| Product Type:           | Primary Antibodies  |
| Applications:           | WB  |
| Reactivity:             | Human   |
| Host:                   | Rabbit  |
| Clonality:              | Polyclonal  |
| Immunogen:              | The immunogen is a synthetic peptide directed towards the N terminal region of human MC5R   |
| Specificity:            | <b>Expected reactivity:</b> Human   |
| Formulation:            | Liquid. Purified antibody supplied in 1x PBS buffer with 0.09% (w/v) sodium azide and 2% sucrose.<br><i>Note that this product is shipped as lyophilized powder to China customers.</i>   |
| Concentration:          | lot specific  |
| Purification:           | Affinity purified   |
| Conjugation:            | Unconjugated  |
| Storage:                | For short term use, store at 2-8°C up to 1 week. For long term storage, store at -20°C in small aliquots to prevent freeze-thaw cycles.   |
| Stability:              | Shelf life: one year from despatch.   |
| Predicted Protein Size: | 35 kDa  |
| Gene Name:              | melanocortin 5 receptor   |
| Database Link:          | <a href="#">NP_005904.1</a><br><a href="#">Entrez Gene 4161 Human P33032</a>  |
| Background:             | This gene encodes a member of the seven-pass transmembrane G protein-coupled melanocortin receptor protein family that stimulate cAMP signal transduction. The encoded protein is a receptor for melanocyte-stimulating hormone and adrenocorticotrophic hormone and is suggested to play a role in sebum generation. |
| Synonyms:               | MC-2; MC5-R   |
| Protein Families:       | Druggable Genome, GPCR, Transmembrane   |



[View online »](#)

Protein Pathways: Neuroactive ligand-receptor interaction

### Product images:



Host: Rabbit  
Target Name: MC5R  
Sample Type: MCF7 Cell Lysate  
Antibody Dilution: 1.0 $\mu$ g/ml

Host: Rabbit  
Target Name: MC5R  
Sample Tissue: Human MCF7 Whole Cell lysates  
Antibody Dilution: 1  $\mu$ g/ml