

## Product datasheet for **TA361328**

### **MNK1 (MKNK1) Rabbit Polyclonal Antibody**

#### **Product data:**

Product Type:	Primary Antibodies
Applications:	WB
Reactivity:	Human
Host:	Rabbit
Clonality:	Polyclonal
Immunogen:	The immunogen is a synthetic peptide directed towards the N terminal region of human MKNK1
Specificity:	<b>Expected reactivity:</b> Human
Formulation:	Liquid. Purified antibody supplied in 1x PBS buffer with 0.09% (w/v) sodium azide and 2% sucrose. <i>Note that this product is shipped as lyophilized powder to China customers.</i>
Concentration:	lot specific
Purification:	Affinity purified
Conjugation:	Unconjugated
Storage:	For short term use, store at 2-8°C up to 1 week. For long term storage, store at -20°C in small aliquots to prevent freeze-thaw cycles.
Stability:	Shelf life: one year from despatch.
Predicted Protein Size:	51 kDa
Gene Name:	MAP kinase interacting serine/threonine kinase 1
Database Link:	<a href="#">NP_001129025.1</a> <a href="#">Entrez Gene 8569 Human</a> <a href="#">Q9BUB5</a>
Background:	This gene encodes a Ser/Thr protein kinase that interacts with, and is activated by ERK1 and p38 mitogen-activated protein kinases, and thus may play a role in the response to environmental stress and cytokines. This kinase may also regulate transcription by phosphorylating eIF4E via interaction with the C-terminal region of eIF4G. Alternatively spliced transcript variants have been noted for this gene.
Synonyms:	MNK1

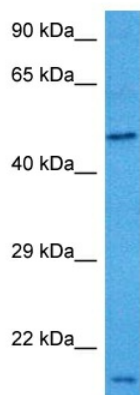


[View online »](#)

Protein Families: Druggable Genome, Protein Kinase

Protein Pathways: Insulin signaling pathway, MAPK signaling pathway

### Product images:



Host: Rabbit  
Target Name: MKNK1  
Sample Type: U937 Cell Lysate  
Antibody Dilution: 1.0 $\mu$ g/ml

Host: Rabbit  
Target Name: MKNK1  
Sample Tissue: Human U937 Whole Cell lysates  
Antibody Dilution: 1 $\mu$ g/ml