

Product datasheet for **TA361321**

MEK7 (MAP2K7) Rabbit Polyclonal Antibody

Product data:

Product Type:	Primary Antibodies
Applications:	WB
Reactivity:	Human
Host:	Rabbit
Clonality:	Polyclonal
Immunogen:	The immunogen is a synthetic peptide directed towards the N terminal region of human MAP2K7
Specificity:	Expected reactivity: Human
Formulation:	Liquid. Purified antibody supplied in 1x PBS buffer with 0.09% (w/v) sodium azide and 2% sucrose. <i>Note that this product is shipped as lyophilized powder to China customers.</i>
Concentration:	lot specific
Purification:	Affinity purified
Conjugation:	Unconjugated
Storage:	For short term use, store at 2-8°C up to 1 week. For long term storage, store at -20°C in small aliquots to prevent freeze-thaw cycles.
Stability:	Shelf life: one year from despatch.
Predicted Protein Size:	50 kDa
Gene Name:	mitogen-activated protein kinase kinase 7
Database Link:	NP_001284484.1 Entrez Gene 5609 Human O14733-2
Background:	The protein encoded by this gene is a dual specificity protein kinase that belongs to the MAP kinase kinase family. This kinase specifically activates MAPK8/JNK1 and MAPK9/JNK2, and this kinase itself is phosphorylated and activated by MAP kinase kinase kinases including MAP3K1/MEKK1, MAP3K2/MEKK2, MAP3K3/MEKK5, and MAP4K2/GCK. This kinase is involved in the signal transduction mediating the cell responses to proinflammatory cytokines, and environmental stresses. Alternative splicing results in multiple transcript variants.



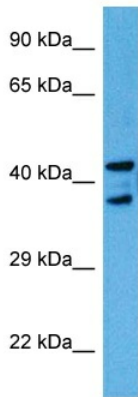
[View online >](#)

Synonyms: Jnkk2; MAPKK7; MEK7; MKK7; PRKMK7

Protein Families: Druggable Genome, Protein Kinase

Protein Pathways: ErbB signaling pathway, Fc epsilon RI signaling pathway, GnRH signaling pathway, MAPK signaling pathway, Neurotrophin signaling pathway, T cell receptor signaling pathway, Toll-like receptor signaling pathway

Product images:



Host: Rabbit
 Target Name: MAP2K7
 Sample Type: COLO205 Cell Lysate
 Antibody Dilution: 1.0µg/ml

Host: Rabbit
 Target Name: MAP2K7
 Sample Tissue: Human COLO205 Whole Cell lysates
 Antibody Dilution: 1 ug/ml