

Product datasheet for **TA361313**

NASP Rabbit Polyclonal Antibody

Product data:

Product Type:	Primary Antibodies
Applications:	WB
Reactivity:	Human
Host:	Rabbit
Clonality:	Polyclonal
Immunogen:	The immunogen is a synthetic peptide directed towards the C terminal region of human NASP
Specificity:	Expected reactivity: Human
Formulation:	Liquid. Purified antibody supplied in 1x PBS buffer with 0.09% (w/v) sodium azide and 2% sucrose. <i>Note that this product is shipped as lyophilized powder to China customers.</i>
Concentration:	lot specific
Purification:	Affinity purified
Conjugation:	Unconjugated
Storage:	For short term use, store at 2-8°C up to 1 week. For long term storage, store at -20°C in small aliquots to prevent freeze-thaw cycles.
Stability:	Shelf life: one year from despatch.
Predicted Protein Size:	49 kDa
Gene Name:	nuclear autoantigenic sperm protein
Database Link:	NP_001182122.1 Entrez Gene 4678 Human P49321-2



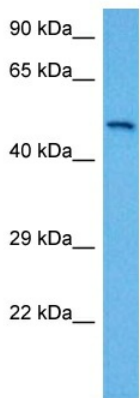
[View online »](#)

Background:

This gene encodes a H1 histone binding protein that is involved in transporting histones into the nucleus of dividing cells. Multiple isoforms are encoded by transcript variants of this gene. The somatic form is expressed in all mitotic cells, is localized to the nucleus, and is coupled to the cell cycle. The testicular form is expressed in embryonic tissues, tumor cells, and the testis. In male germ cells, this protein is localized to the cytoplasm of primary spermatocytes, the nucleus of spermatids, and the periacrosomal region of mature spermatozoa.

Synonyms:

DKFZp547F162; FLB7527; FLJ31599; FLJ35510; MGC2297; MGC19722; MGC20372; N1/N2-like; PRO1999

Product images:


Host: Rabbit
 Target Name: NASP
 Sample Type: Mesenchymoma Tumor Lysate
 Antibody Dilution: 1.0µg/ml

Host: Rabbit
 Target Name: NASP
 Sample Tissue: Human Mesenchymoma Tumor lysates
 Antibody Dilution: 1ug/ml