

Product datasheet for **TA361312**

LTBR Rabbit Polyclonal Antibody

Product data:

| | |
|-------------------------|--|
| Product Type: | Primary Antibodies |
| Applications: | WB |
| Reactivity: | Human |
| Host: | Rabbit |
| Clonality: | Polyclonal |
| Immunogen: | The immunogen is a synthetic peptide directed towards the C terminal region of human LTBR |
| Specificity: | Expected reactivity: Human |
| Formulation: | Liquid. Purified antibody supplied in 1x PBS buffer with 0.09% (w/v) sodium azide and 2% sucrose. <i>Note that this product is shipped as lyophilized powder to China customers.</i> |
| Concentration: | lot specific |
| Purification: | Affinity purified |
| Conjugation: | Unconjugated |
| Storage: | For short term use, store at 2-8°C up to 1 week. For long term storage, store at -20°C in small aliquots to prevent freeze-thaw cycles. |
| Stability: | Shelf life: one year from despatch. |
| Predicted Protein Size: | 47 kDa |
| Gene Name: | lymphotoxin beta receptor |
| Database Link: | NP_001257916.1 Entrez Gene 4055 Human P36941 |
| Background: | This gene encodes a member of the tumor necrosis factor receptor superfamily. The major ligands of this receptor include lymphotoxin alpha/beta and tumor necrosis factor ligand superfamily member 14. The encoded protein plays a role in signalling during the development of lymphoid and other organs, lipid metabolism, immune response, and programmed cell death. Activity of this receptor has also been linked to carcinogenesis. Alternatively spliced transcript variants encoding multiple isoforms have been observed. |



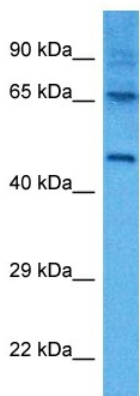
[View online »](#)

Synonyms: CD18; D12S370; LT-BETA-R; TNF-R-III; TNF-R-III; TNFCR; TNFR-III; TNFR-RP; TNFR2-RP; TNFR3; TNFRSF3

Protein Families: Druggable Genome, Transmembrane

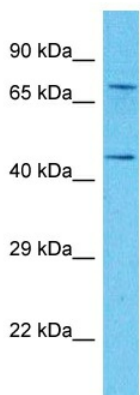
Protein Pathways: Cytokine-cytokine receptor interaction

Product images:



Host: Rabbit
 Target Name: LTBR
 Sample Type: HCT15 Cell Lysate
 Antibody Dilution: 1.0µg/ml

Host: Rabbit
 Target Name: LTBR
 Sample Tissue: Human HCT15 Whole Cell lysates
 Antibody Dilution: 1ug/ml



Host: Rabbit
 Target Name: LTBR
 Sample Type: OVCAR-3 Cell Lysate
 Antibody Dilution: 1.0µg/ml

Host: Rabbit
 Target Name: LTBR
 Sample Tissue: Human OVCAR-3 Whole Cell
 Antibody Dilution: 1ug/ml