

Product datasheet for **TA361306**

MAD1 (MAD1L1) Rabbit Polyclonal Antibody

Product data:

| | |
|-------------------------|---|
| Product Type: | Primary Antibodies |
| Applications: | WB |
| Reactivity: | Human |
| Host: | Rabbit |
| Clonality: | Polyclonal |
| Immunogen: | The immunogen is a synthetic peptide directed towards the N terminal region of human MAD1L1 |
| Specificity: | Expected reactivity: Human |
| Formulation: | Liquid. Purified antibody supplied in 1x PBS buffer with 0.09% (w/v) sodium azide and 2% sucrose. <i>Note that this product is shipped as lyophilized powder to China customers.</i> |
| Concentration: | lot specific |
| Purification: | Affinity purified |
| Conjugation: | Unconjugated |
| Storage: | For short term use, store at 2-8°C up to 1 week. For long term storage, store at -20°C in small aliquots to prevent freeze-thaw cycles. |
| Stability: | Shelf life: one year from despatch. |
| Predicted Protein Size: | 78 kDa |
| Gene Name: | MAD1 mitotic arrest deficient like 1 |
| Database Link: | NP_001013858.1 Entrez Gene 8379 Human Q9Y6D9 |
| Background: | MAD1L1 is a component of the mitotic spindle-assembly checkpoint that prevents the onset of anaphase until all chromosome are properly aligned at the metaphase plate. MAD1L1 functions as a homodimer and interacts with MAD2L1. MAD1L1 may play a role in cell cycle control and tumor suppression. Alternative splicing results in multiple transcript variants. |
| Synonyms: | hMAD1; HsMAD1; MAD1; OTTHUMP00000200097; OTTHUMP00000200099; PIG9; TP53I9; TXBP181 |

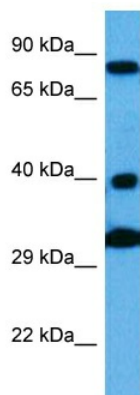


[View online »](#)

Protein Families: Druggable Genome

Protein Pathways: Cell cycle

Product images:



Host: Rabbit
Target Name: MAD1L1
Sample Type: Neurofibroma Tumor Lysate
Antibody Dilution: 1.0 μ g/ml

Host: Rabbit
Target Name: MAD1L1
Sample Tissue: Human Neurofibroma Tumor lysates
Antibody Dilution: 1 μ g/ml