

Product datasheet for **TA361305**

Cathepsin S (CTSS) Rabbit Polyclonal Antibody

Product data:

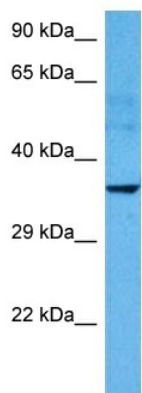
Product Type:	Primary Antibodies
Applications:	WB
Reactivity:	Human
Host:	Rabbit
Clonality:	Polyclonal
Immunogen:	The immunogen is a synthetic peptide directed towards the middle region of human CTSS
Specificity:	Expected reactivity: Human
Formulation:	Liquid. Purified antibody supplied in 1x PBS buffer with 0.09% (w/v) sodium azide and 2% sucrose. <i>Note that this product is shipped as lyophilized powder to China customers.</i>
Concentration:	lot specific
Purification:	Affinity purified
Conjugation:	Unconjugated
Storage:	For short term use, store at 2-8°C up to 1 week. For long term storage, store at -20°C in small aliquots to prevent freeze-thaw cycles.
Stability:	Shelf life: one year from despatch.
Predicted Protein Size:	36 kDa
Gene Name:	cathepsin S
Database Link:	NP_001186668.1 Entrez Gene 1520 Human P25774
Background:	The protein encoded by this gene, a member of the peptidase C1 family, is a lysosomal cysteine proteinase that may participate in the degradation of antigenic proteins to peptides for presentation on MHC class II molecules. The encoded protein can function as an elastase over a broad pH range in alveolar macrophages. Alternatively spliced transcript variants encoding distinct isoforms have been found for this gene.
Synonyms:	MGC3886
Protein Families:	Druggable Genome, Protease



[View online »](#)

Protein Pathways: Antigen processing and presentation, Lysosome

Product images:



Host: Rabbit
Target Name: CTSS
Sample Type: Mesenchymoma Tumor Lysate
Antibody Dilution: 1.0 μ g/ml

Host: Rabbit
Target Name: CTSS
Sample Tissue: Human Mesenchymoma Tumor lysates
Antibody Dilution: 1 μ g/ml