

Product datasheet for **TA361303**

HIP1 Rabbit Polyclonal Antibody

Product data:

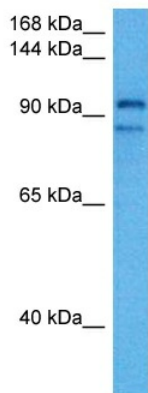
Product Type:	Primary Antibodies
Applications:	WB
Reactivity:	Human
Host:	Rabbit
Clonality:	Polyclonal
Immunogen:	The immunogen is a synthetic peptide directed towards the N terminal region of human HIP1
Specificity:	Expected reactivity: Human
Formulation:	Liquid. Purified antibody supplied in 1x PBS buffer with 0.09% (w/v) sodium azide and 2% sucrose. <i>Note that this product is shipped as lyophilized powder to China customers.</i>
Concentration:	lot specific
Purification:	Affinity purified
Conjugation:	Unconjugated
Storage:	For short term use, store at 2-8°C up to 1 week. For long term storage, store at -20°C in small aliquots to prevent freeze-thaw cycles.
Stability:	Shelf life: one year from despatch.
Predicted Protein Size:	114 kDa
Gene Name:	huntingtin interacting protein 1
Database Link:	NP_001230127.1 Entrez Gene 3092 Human O00291
Background:	The product of this gene is a membrane-associated protein that functions in clathrin-mediated endocytosis and protein trafficking within the cell. The encoded protein binds to the huntingtin protein in the brain; this interaction is lost in Huntington's disease. Alternative splicing results in multiple transcript variants.
Synonyms:	HIP-I; ILWEQ; MGC126506
Protein Families:	Druggable Genome



[View online »](#)

Protein Pathways: Huntington's disease

Product images:



Host: Rabbit
Target Name: HIP1
Sample Type: MCF7 Cell Lysate
Antibody Dilution: 1.0 μ g/ml

Host: Rabbit
Target Name: HIP1
Sample Tissue: Human MCF7 Whole Cell lysates
Antibody Dilution: 1 μ g/ml