

Product datasheet for **TA361288**

Carboxypeptidase B2 (CPB2) Rabbit Polyclonal Antibody

Product data:

Product Type:	Primary Antibodies
Applications:	WB
Reactivity:	Human
Host:	Rabbit
Clonality:	Polyclonal
Immunogen:	The immunogen is a synthetic peptide directed towards the middle region of human CPB2
Specificity:	Expected reactivity: Human
Formulation:	Liquid. Purified antibody supplied in 1x PBS buffer with 0.09% (w/v) sodium azide and 2% sucrose. <i>Note that this product is shipped as lyophilized powder to China customers.</i>
Concentration:	lot specific
Purification:	Affinity purified
Conjugation:	Unconjugated
Storage:	For short term use, store at 2-8°C up to 1 week. For long term storage, store at -20°C in small aliquots to prevent freeze-thaw cycles.
Stability:	Shelf life: one year from despatch.
Predicted Protein Size:	46 kDa
Gene Name:	carboxypeptidase B2
Database Link:	NP_001265470.1 Entrez Gene 1361 Human Q96IY4



[View online »](#)

Background:

Carboxypeptidases are enzymes that hydrolyze C-terminal peptide bonds. The carboxypeptidase family includes metallo-, serine, and cysteine carboxypeptidases. According to their substrate specificity, these enzymes are referred to as carboxypeptidase A (cleaving aliphatic residues) or carboxypeptidase B (cleaving basic amino residues). The protein encoded by this gene is activated by trypsin and acts on carboxypeptidase B substrates. After thrombin activation, the mature protein downregulates fibrinolysis. Polymorphisms have been described for this gene and its promoter region. Alternate splicing results in multiple transcript variants.

Synonyms:

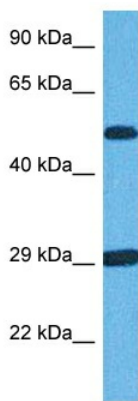
CPU; PCPB; TAFI

Protein Families:

Druggable Genome, Protease, Secreted Protein

Protein Pathways:

Complement and coagulation cascades

Product images:

Host: Rabbit
Target Name: CPB2
Sample Type: DLD1 Cell Lysate
Antibody Dilution: 1.0µg/ml

Host: Rabbit
Target Name: CPB2
Sample Tissue: Human DLD1 Whole Cell lysates
Antibody Dilution: 1ug/ml