

## Product datasheet for **TA361284**

### GRB7 Rabbit Polyclonal Antibody

#### Product data:

|                         |  |
|-------------------------|--|
| Product Type:           | Primary Antibodies   |
| Applications:           | WB   |
| Reactivity:             | Human  |
| Host:                   | Rabbit   |
| Clonality:              | Polyclonal   |
| Immunogen:              | The immunogen is a synthetic peptide directed towards the middle terminal region of human GRB7   |
| Specificity:            | <b>Expected reactivity:</b> Human  |
| Formulation:            | Liquid. Purified antibody supplied in 1x PBS buffer with 0.09% (w/v) sodium azide and 2% sucrose.<br><i>Note that this product is shipped as lyophilized powder to China customers.</i>  |
| Concentration:          | lot specific   |
| Purification:           | Affinity purified  |
| Conjugation:            | Unconjugated   |
| Storage:                | For short term use, store at 2-8°C up to 1 week. For long term storage, store at -20°C in small aliquots to prevent freeze-thaw cycles.  |
| Stability:              | Shelf life: one year from despatch.  |
| Predicted Protein Size: | 49 kDa   |
| Gene Name:              | growth factor receptor bound protein 7   |
| Database Link:          | <a href="#">NP_001025173.1</a><br><a href="#">Entrez Gene 2886 Human</a><br><a href="#">Q14451-2</a>   |
| Background:             | The product of this gene belongs to a small family of adapter proteins that are known to interact with a number of receptor tyrosine kinases and signaling molecules. This gene encodes a growth factor receptor-binding protein that interacts with epidermal growth factor receptor (EGFR) and ephrin receptors. The protein plays a role in the integrin signaling pathway and cell migration by binding with focal adhesion kinase (FAK). Several transcript variants encoding two different isoforms have been found for this gene. |

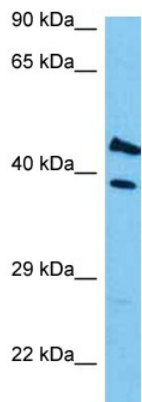


[View online >](#)

Synonyms: MGC93307; mKIAA4028

Protein Families: Druggable Genome, Embryonic stem cells, Stem cell - Pluripotency

### Product images:



Host: Rabbit  
Target Name: GRB7  
Sample Type: PC-3 Cell Lysate  
Antibody Dilution: 1.0 $\mu$ g/ml

Host: Rabbit  
Target Name: GRB7  
Sample Tissue: Human PC-3 Whole Cell lysates  
Antibody Dilution: 1 $\mu$ g/ml