

Product datasheet for **TA361270**

epithelial Sodium Channel alpha (SCNN1A) Rabbit Polyclonal Antibody

Product data:

Product Type:	Primary Antibodies
Applications:	WB
Reactivity:	Human
Host:	Rabbit
Clonality:	Polyclonal
Immunogen:	The immunogen is a synthetic peptide directed towards the N terminal region of human SCNN1A
Specificity:	Expected reactivity: Human
Formulation:	Liquid. Purified antibody supplied in 1x PBS buffer with 0.09% (w/v) sodium azide and 2% sucrose.
Concentration:	lot specific
Purification:	Affinity purified
Conjugation:	Unconjugated
Storage:	For short term use, store at 2-8°C up to 1 week. For long term storage, store at -20°C in small aliquots to prevent freeze-thaw cycles.
Stability:	Shelf life: one year from despatch.
Predicted Protein Size:	26 kDa
Gene Name:	sodium channel epithelial 1 alpha subunit
Database Link:	NP_001029.1 Entrez Gene 6337 Human P37088-3
Background:	Nonvoltage-gated, amiloride-sensitive, sodium channels control fluid and electrolyte transport across epithelia in many organs. These channels are heteromeric complexes consisting of 3 subunits: alpha, beta, and gamma. This gene encodes the alpha subunit, and mutations in this gene have been associated with pseudohypoaldosteronism type 1 (PHA1), a rare salt wasting disease resulting from target organ unresponsiveness to mineralocorticoids. Alternatively spliced transcript variants encoding different isoforms have been described for this gene.



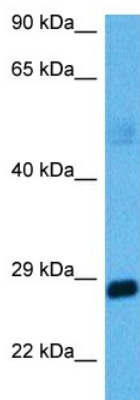
[View online »](#)

Synonyms: Alpha-ENaC; Alpha-NaCH; BESC2; ENaCa; ENaCalpha; FLJ21883; SCNEA; SCNN1

Protein Families: Druggable Genome, Ion Channels: Other, Transmembrane

Protein Pathways: Taste transduction

Product images:



Host: Rabbit
Target Name: SCNN1A
Sample Type: Leiomyosarcoma Tumor Lysate
Antibody Dilution: 1.0 μ g/ml

Host: Rabbit
Target Name: SCNN1A
Sample Tissue: Human Leiomyosarcoma Tumor lysates
Antibody Dilution: 1 μ g/ml