

## Product datasheet for **TA361269**

### **TAB1 Rabbit Polyclonal Antibody**

#### **Product data:**

Product Type:	Primary Antibodies
Applications:	WB
Reactivity:	Human
Host:	Rabbit
Clonality:	Polyclonal
Immunogen:	The immunogen is a synthetic peptide directed towards the C terminal region of human TAB1
Specificity:	<b>Expected reactivity:</b> Human
Formulation:	Liquid. Purified antibody supplied in 1x PBS buffer with 0.09% (w/v) sodium azide and 2% sucrose. <i>Note that this product is shipped as lyophilized powder to China customers.</i>
Concentration:	lot specific
Purification:	Affinity purified
Conjugation:	Unconjugated
Storage:	For short term use, store at 2-8°C up to 1 week. For long term storage, store at -20°C in small aliquots to prevent freeze-thaw cycles.
Stability:	Shelf life: one year from despatch.
Predicted Protein Size:	71 kDa
Gene Name:	TGF-beta activated kinase 1/MAP3K7 binding protein 1
Database Link:	<a href="#">NP_006107.1</a> <a href="#">Entrez Gene 10454 Human</a> <a href="#">Q59FT7</a>



[View online »](#)

**Background:**

The protein encoded by this gene was identified as a regulator of the MAP kinase kinase kinase MAP3K7/TAK1, which is known to mediate various intracellular signaling pathways, such as those induced by TGF beta, interleukin 1, and WNT-1. This protein interacts and thus activates TAK1 kinase. It has been shown that the C-terminal portion of this protein is sufficient for binding and activation of TAK1, while a portion of the N-terminus acts as a dominant-negative inhibitor of TGF beta, suggesting that this protein may function as a mediator between TGF beta receptors and TAK1. This protein can also interact with and activate the mitogen-activated protein kinase 14 (MAPK14/p38alpha), and thus represents an alternative activation pathway, in addition to the MAPKK pathways, which contributes to the biological responses of MAPK14 to various stimuli. Alternatively spliced transcript variants encoding distinct isoforms have been reported.

**Synonyms:**

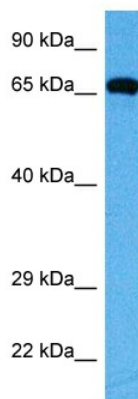
2310012M03Rik; Map3k7ip1

**Protein Families:**

Druggable Genome

**Protein Pathways:**

MAPK signaling pathway, NOD-like receptor signaling pathway, Toll-like receptor signaling pathway

**Product images:**

Host: Rabbit  
Target Name: TAB1  
Sample Type: HT1080 Cell Lysate  
Antibody Dilution: 1.0µg/ml

Host: Rabbit  
Target Name: TAB1  
Sample Tissue: Human HT1080 Whole Cell lysates  
Antibody Dilution: 1 ug/ml