

## Product datasheet for **TA361265**

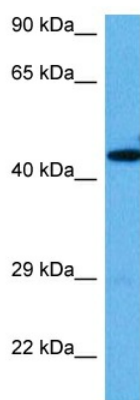
### BRAP Rabbit Polyclonal Antibody

#### Product data:

Product Type:	Primary Antibodies
Applications:	WB
Reactivity:	Human
Host:	Rabbit
Clonality:	Polyclonal
Immunogen:	The immunogen is a synthetic peptide directed towards the C terminal region of human BRAP
Specificity:	<b>Expected reactivity:</b> Human
Formulation:	Liquid. Purified antibody supplied in 1x PBS buffer with 0.09% (w/v) sodium azide and 2% sucrose.
Concentration:	lot specific
Purification:	Affinity purified
Conjugation:	Unconjugated
Storage:	For short term use, store at 2-8°C up to 1 week. For long term storage, store at -20°C in small aliquots to prevent freeze-thaw cycles.
Stability:	Shelf life: one year from despatch.
Predicted Protein Size:	45 kDa
Gene Name:	BRCA1 associated protein
Database Link:	<a href="#">NP_006759.3</a> <a href="#">Entrez Gene 8315 Human</a> <a href="#">Q7Z569-2</a>
Background:	The protein encoded by this gene was identified by its ability to bind to the nuclear localization signal of BRCA1 and other proteins. It is a cytoplasmic protein which may regulate nuclear targeting by retaining proteins with a nuclear localization signal in the cytoplasm.
Synonyms:	BRAP2; IMP; RNF52
Protein Families:	Druggable Genome



[View online »](#)

**Product images:**

Host: Rabbit  
Target Name: BRAP  
Sample Type: Jurkat Cell Lysate  
Antibody Dilution: 1.0 $\mu$ g/ml

Host: Rabbit  
Target Name: BRAP  
Sample Tissue: Human Jurkat Whole Cell lysates  
Antibody Dilution: 1 $\mu$ g/ml