

Product datasheet for **TA361261**

Lubricin (PRG4) Rabbit Polyclonal Antibody

Product data:

Product Type:	Primary Antibodies
Applications:	WB
Reactivity:	Human
Host:	Rabbit
Clonality:	Polyclonal
Immunogen:	The immunogen is a synthetic peptide directed towards the N terminal region of human PRG4
Specificity:	Expected reactivity: Human
Formulation:	Liquid. Purified antibody supplied in 1x PBS buffer with 0.09% (w/v) sodium azide and 2% sucrose. <i>Note that this product is shipped as lyophilized powder to China customers.</i>
Concentration:	lot specific
Purification:	Affinity purified
Conjugation:	Unconjugated
Storage:	For short term use, store at 2-8°C up to 1 week. For long term storage, store at -20°C in small aliquots to prevent freeze-thaw cycles.
Stability:	Shelf life: one year from despatch.
Predicted Protein Size:	144 kDa
Gene Name:	proteoglycan 4
Database Link:	NP_001121180.1 Entrez Gene 10216 Human Q92954-3



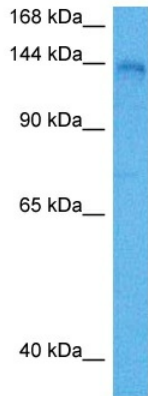
[View online »](#)

Background:

The protein encoded by this gene is a large proteoglycan that is synthesized by chondrocytes located at the surface of articular cartilage and by some synovial lining cells. This protein contains both chondroitin sulfate and keratan sulfate glycosaminoglycans. It functions as a boundary lubricant at the cartilage surface and contributes to the elastic absorption and energy dissipation of synovial fluid. Mutations in this gene result in camptodactyly-arthropathy-coxa vara-pericarditis syndrome. Alternative splicing results in multiple transcript variants.

Synonyms:

bG174L6.2; CACP; FLJ32635; HAPO; JCAP; lubricin; MSF; OTTHUMP00000033580; SZP

Product images:


Host: Rabbit
 Target Name: PRG4
 Sample Type: A172 Cell Lysate
 Antibody Dilution: 1.0µg/ml

Host: Rabbit
 Target Name: PRG4
 Sample Tissue: Human A172 Whole Cell lysates
 Antibody Dilution: 1ug/ml