

Product datasheet for **TA361258**

ST7 Rabbit Polyclonal Antibody

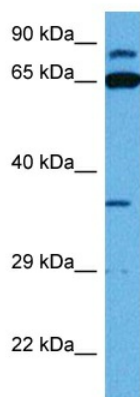
Product data:

Product Type:	Primary Antibodies
Applications:	WB
Reactivity:	Human
Host:	Rabbit
Clonality:	Polyclonal
Immunogen:	The immunogen is a synthetic peptide directed towards the middle region of human ST7
Specificity:	Expected reactivity: Human
Formulation:	Liquid. Purified antibody supplied in 1x PBS buffer with 0.09% (w/v) sodium azide and 2% sucrose.
Concentration:	lot specific
Purification:	Affinity purified
Conjugation:	Unconjugated
Storage:	For short term use, store at 2-8°C up to 1 week. For long term storage, store at -20°C in small aliquots to prevent freeze-thaw cycles.
Stability:	Shelf life: one year from despatch.
Predicted Protein Size:	64 kDa
Gene Name:	suppression of tumorigenicity 7
Database Link:	NP_060882.2 Entrez Gene 7982 Human Q9NRC1
Background:	The gene for this product maps to a region on chromosome 7 identified as an autism-susceptibility locus. Mutation screening of the entire coding region in autistic individuals failed to identify phenotype-specific variants, suggesting that coding mutations for this gene are unlikely to be involved in the etiology of autism. The function of this gene product has not been determined. Transcript variants encoding different isoforms of this protein have been described.
Synonyms:	DKFZp762O2113; ETS7q; FAM4A; FAM4A1; HELG; RAY1; SEN4; TSG7
Protein Families:	Transmembrane



[View online »](#)

Product images:



Host: Rabbit
Target Name: ST7
Sample Type: HT1080 Cell Lysate
Antibody Dilution: 1.0 μ g/ml

Host: Rabbit
Target Name: ST7
Sample Tissue: Human HT1080 Whole Cell lysates
Antibody Dilution: 1 μ g/ml