

Product datasheet for **TA361255**

BRIP1 Rabbit Polyclonal Antibody

Product data:

Product Type:	Primary Antibodies
Applications:	WB
Reactivity:	Human
Host:	Rabbit
Clonality:	Polyclonal
Immunogen:	The immunogen is a synthetic peptide directed towards the N terminal region of human BRIP1
Specificity:	Expected reactivity: Human
Formulation:	Liquid. Purified antibody supplied in 1x PBS buffer with 0.09% (w/v) sodium azide and 2% sucrose. <i>Note that this product is shipped as lyophilized powder to China customers.</i>
Concentration:	lot specific
Purification:	Affinity purified
Conjugation:	Unconjugated
Storage:	For short term use, store at 2-8°C up to 1 week. For long term storage, store at -20°C in small aliquots to prevent freeze-thaw cycles.
Stability:	Shelf life: one year from despatch.
Predicted Protein Size:	137 kDa
Gene Name:	BRCA1 interacting protein C-terminal helicase 1
Database Link:	NP_114432.2 Entrez Gene 83990 Human Q9BX63
Background:	The protein encoded by this gene is a member of the RecQ DEAH helicase family and interacts with the BRCT repeats of breast cancer, type 1 (BRCA1). The bound complex is important in the normal double-strand break repair function of breast cancer, type 1 (BRCA1). This gene may be a target of germline cancer-inducing mutations.
Synonyms:	BACH1; FANCF; FLJ90232; MGC126521; MGC126523; OF
Protein Families:	Druggable Genome

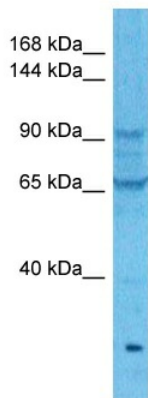


[View online >](#)

Product images:


Host: Rabbit
 Target Name: BRIP1
 Sample Type: Thyroid Tumor Lysate
 Antibody Dilution: 1.0 μ g/ml

Host: Rabbit
 Target Name: BRIP1
 Sample Tissue: Human Thyroid Tumor lysates
 Antibody Dilution: 1ug/ml



Host: Rabbit
 Target Name: BRIP1
 Sample Type: PANC1 Cell Lysate
 Antibody Dilution: 1.0 μ g/ml

Host: Rabbit
 Target Name: BRIP1
 Sample Tissue: Human PANC1 Whole Cell
 Antibody Dilution: 1ug/ml