

## Product datasheet for **TA361253**

### Adipose Triglyceride Lipase (PNPLA2) Rabbit Polyclonal Antibody

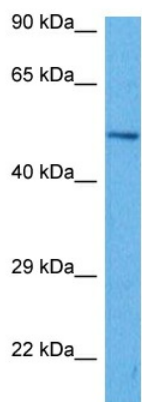
#### Product data:

Product Type:	Primary Antibodies
Applications:	WB
Reactivity:	Human
Host:	Rabbit
Clonality:	Polyclonal
Immunogen:	The immunogen is a synthetic peptide directed towards the middle region of human PNPLA2
Specificity:	<b>Expected reactivity:</b> Human
Formulation:	Liquid. Purified antibody supplied in 1x PBS buffer with 0.09% (w/v) sodium azide and 2% sucrose. <i>Note that this product is shipped as lyophilized powder to China customers.</i>
Concentration:	lot specific
Purification:	Affinity purified
Conjugation:	Unconjugated
Storage:	For short term use, store at 2-8°C up to 1 week. For long term storage, store at -20°C in small aliquots to prevent freeze-thaw cycles.
Stability:	Shelf life: one year from despatch.
Predicted Protein Size:	55 kDa
Gene Name:	patatin like phospholipase domain containing 2
Database Link:	<a href="#">NP_065109.1</a> <a href="#">Entrez Gene 57104 Human</a> <a href="#">Q96AD5</a>
Background:	This gene encodes an enzyme which catalyzes the first step in the hydrolysis of triglycerides in adipose tissue. Mutations in this gene are associated with neutral lipid storage disease with myopathy.
Synonyms:	1110001C14Rik; ATGL; DESNUTRIN; DKFZp667M109; FP17548; IPLA2-zeta; PEDF-R; TTS-2.2; TTS2; TTS2.2
Protein Families:	Transmembrane



[View online »](#)

## Product images:



Host: Rabbit  
Target Name: PNPLA2  
Sample Type: Jurkat Cell Lysate  
Antibody Dilution: 1.0 $\mu$ g/ml

Host: Rabbit  
Target Name: PNPLA2  
Sample Tissue: Human Jurkat Whole Cell lysates  
Antibody Dilution: 1 $\mu$ g/ml