

Product datasheet for **TA361245**

XRCC2 Rabbit Polyclonal Antibody

Product data:

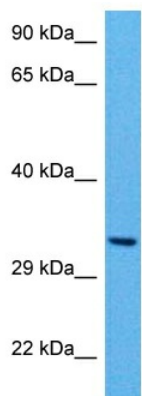
Product Type:	Primary Antibodies
Applications:	WB
Reactivity:	Human
Host:	Rabbit
Clonality:	Polyclonal
Immunogen:	The immunogen is a synthetic peptide directed towards the middle region of human XRCC2
Specificity:	Expected reactivity: Human
Formulation:	Liquid. Purified antibody supplied in 1x PBS buffer with 0.09% (w/v) sodium azide and 2% sucrose. <i>Note that this product is shipped as lyophilized powder to China customers.</i>
Concentration:	lot specific
Purification:	Affinity purified
Conjugation:	Unconjugated
Storage:	For short term use, store at 2-8°C up to 1 week. For long term storage, store at -20°C in small aliquots to prevent freeze-thaw cycles.
Stability:	Shelf life: one year from despatch.
Predicted Protein Size:	30 kDa
Gene Name:	X-ray repair complementing defective repair in Chinese hamster cells 2
Database Link:	NP_005422.1 Entrez Gene 7516 Human O43543
Background:	This gene encodes a member of the RecA/Rad51-related protein family that participates in homologous recombination to maintain chromosome stability and repair DNA damage. This gene is involved in the repair of DNA double-strand breaks by homologous recombination and it functionally complements Chinese hamster <i>irs1</i> , a repair-deficient mutant that exhibits hypersensitivity to a number of different DNA-damaging agents.
Synonyms:	DKFZp781P0919; RAD51-like
Protein Families:	Druggable Genome



[View online »](#)

Protein Pathways: Homologous recombination

Product images:



Host: Rabbit
Target Name: XRCC2
Sample Type: A549 Cell Lysate
Antibody Dilution: 1.0 μ g/ml

Host: Rabbit
Target Name: XRCC2
Sample Tissue: Human A549 whole Cell lysates
Antibody Dilution: 1 μ g/ml