

Product datasheet for **TA361234**

EIF2B1 Rabbit Polyclonal Antibody

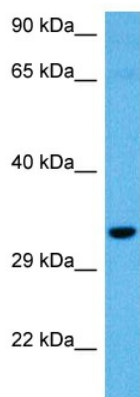
Product data:

Product Type:	Primary Antibodies
Applications:	WB
Reactivity:	Human
Host:	Rabbit
Clonality:	Polyclonal
Immunogen:	The immunogen is a synthetic peptide directed towards the middle region of human EIF2B1
Specificity:	Expected reactivity: Human
Formulation:	Liquid. Purified antibody supplied in 1x PBS buffer with 0.09% (w/v) sodium azide and 2% sucrose. <i>Note that this product is shipped as lyophilized powder to China customers.</i>
Concentration:	lot specific
Purification:	Affinity purified
Conjugation:	Unconjugated
Storage:	For short term use, store at 2-8°C up to 1 week. For long term storage, store at -20°C in small aliquots to prevent freeze-thaw cycles.
Stability:	Shelf life: one year from despatch.
Predicted Protein Size:	33 kDa
Gene Name:	eukaryotic translation initiation factor 2B subunit alpha
Database Link:	NP_001405.1 Entrez Gene 1967 Human Q14232
Background:	This gene encodes one of five subunits of eukaryotic translation initiation factor 2B (EIF2B), a GTP exchange factor for eukaryotic initiation factor 2 and an essential regulator for protein synthesis. Mutations in this gene and the genes encoding other EIF2B subunits have been associated with leukoencephalopathy with vanishing white matter.
Synonyms:	EIF-2B; EIF-2Balpha; EIF2B; EIF2BA; MGC117409; MGC125868; MGC125869



[View online »](#)

Product images:



Host: Rabbit
Target Name: EIF2B1
Sample Type: Jurkat Cell Lysate
Antibody Dilution: 1.0 μ g/ml

Host: Rabbit
Target Name: EIF2B1
Sample Tissue: Human Jurkat Whole Cell lysates
Antibody Dilution: 1 μ g/ml