

## Product datasheet for **TA361228**

### KCNE2 Rabbit Polyclonal Antibody

#### Product data:

Product Type:	Primary Antibodies
Applications:	WB
Reactivity:	Human
Host:	Rabbit
Clonality:	Polyclonal
Immunogen:	The immunogen is a synthetic peptide directed towards the middle region of human KCNE2
Specificity:	<b>Expected reactivity:</b> Human
Formulation:	Liquid. Purified antibody supplied in 1x PBS buffer with 0.09% (w/v) sodium azide and 2% sucrose. <i>Note that this product is shipped as lyophilized powder to China customers.</i>
Concentration:	lot specific
Purification:	Affinity purified
Conjugation:	Unconjugated
Storage:	For short term use, store at 2-8°C up to 1 week. For long term storage, store at -20°C in small aliquots to prevent freeze-thaw cycles.
Stability:	Shelf life: one year from despatch.
Predicted Protein Size:	13 kDa
Gene Name:	potassium voltage-gated channel subfamily E regulatory subunit 2
Database Link:	<a href="#">NP_751951.1</a> <a href="#">Entrez Gene 9992 Human</a> <a href="#">Q9Y6I6</a>



[View online »](#)

**Background:**

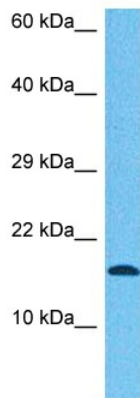
Voltage-gated potassium (Kv) channels represent the most complex class of voltage-gated ion channels from both functional and structural standpoints. Their diverse functions include regulating neurotransmitter release, heart rate, insulin secretion, neuronal excitability, epithelial electrolyte transport, smooth muscle contraction, and cell volume. This gene encodes a member of the potassium channel, voltage-gated, isk-related subfamily. This member is a small integral membrane subunit that assembles with the KCNH2 gene product, a pore-forming protein, to alter its function. This gene is expressed in heart and muscle and the gene mutations are associated with cardiac arrhythmia.

**Synonyms:**

ATFB4; LQT5; LQT6; MGC138292; MIRP1

**Protein Families:**

Druggable Genome, Transmembrane

**Product images:**

Host: Rabbit  
Target Name: KCNE2  
Sample Type: DLD1 Cell Lysate  
Antibody Dilution: 1.0µg/ml

Host: Rabbit  
Target Name: KCNE2  
Sample Tissue: Human DLD1 Whole Cell lysates  
Antibody Dilution: 1ug/ml