

Product datasheet for **TA361225**

MCHR (MCHR1) Rabbit Polyclonal Antibody

Product data:

Product Type:	Primary Antibodies
Applications:	WB
Reactivity:	Human, Mouse
Host:	Rabbit
Clonality:	Polyclonal
Immunogen:	The immunogen is a synthetic peptide directed towards the C terminal region of human MCHR1
Specificity:	Expected reactivity: Human
Formulation:	Liquid. Purified antibody supplied in 1x PBS buffer with 0.09% (w/v) sodium azide and 2% sucrose. <i>Note that this product is shipped as lyophilized powder to China customers.</i>
Concentration:	lot specific
Purification:	Affinity purified
Conjugation:	Unconjugated
Storage:	For short term use, store at 2-8°C up to 1 week. For long term storage, store at -20°C in small aliquots to prevent freeze-thaw cycles.
Stability:	Shelf life: one year from despatch.
Predicted Protein Size:	32 kDa
Gene Name:	melanin concentrating hormone receptor 1
Database Link:	NP_005288.3 Entrez Gene 207911 Mouse Entrez Gene 2847 Human Q5IFH6
Background:	The protein encoded by this gene, a member of the G protein-coupled receptor family 1, is an integral plasma membrane protein which binds melanin-concentrating hormone. The encoded protein can inhibit cAMP accumulation and stimulate intracellular calcium flux, and is probably involved in the neuronal regulation of food consumption. Although structurally similar to somatostatin receptors, this protein does not seem to bind somatostatin.
Synonyms:	GPR24; MCH-1R; MCH-R1; MCH1R; MCHR; MCHR-1; MGC32129; SLC-1; SLC1

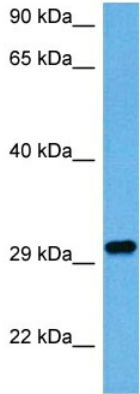


[View online »](#)

Protein Families: Druggable Genome, GPCR, Transmembrane

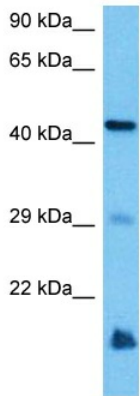
Protein Pathways: Neuroactive ligand-receptor interaction

Product images:



Host: Rabbit
 Target Name: MCHR1
 Sample Type: ACHN Cell Lysate
 Antibody Dilution: 1.0µg/ml

Host: Rabbit
 Target Name: MCHR1
 Sample Tissue: Human ACHN Whole Cell lysates
 Antibody Dilution: 1ug/ml



Host: Rabbit
 Target Name: Mchr1
 Sample Type: Mouse Heart Lysate
 Antibody Dilution: 1.0µg/ml

Host: Mouse
 Target Name: MCHR1
 Sample Tissue: Mouse Heart
 Antibody Dilution: 1ug/ml