

## Product datasheet for **TA361224**

### **RIP2 (RIPK2) Rabbit Polyclonal Antibody**

#### **Product data:**

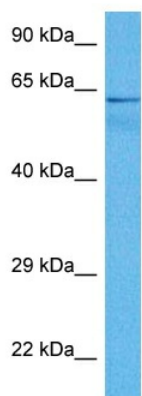
Product Type:	Primary Antibodies
Applications:	WB
Reactivity:	Human
Host:	Rabbit
Clonality:	Polyclonal
Immunogen:	The immunogen is a synthetic peptide directed towards the middle region of human RIPK2
Specificity:	<b>Expected reactivity:</b> Human
Formulation:	Liquid. Purified antibody supplied in 1x PBS buffer with 0.09% (w/v) sodium azide and 2% sucrose.
Concentration:	lot specific
Purification:	Affinity purified
Conjugation:	Unconjugated
Storage:	For short term use, store at 2-8°C up to 1 week. For long term storage, store at -20°C in small aliquots to prevent freeze-thaw cycles.
Stability:	Shelf life: one year from despatch.
Predicted Protein Size:	59 kDa
Gene Name:	receptor interacting serine/threonine kinase 2
Database Link:	<a href="#">NP_003812.1</a> <a href="#">Entrez Gene 8767 Human</a> <a href="#">O43353</a>
Background:	This gene encodes a member of the receptor-interacting protein (RIP) family of serine/threonine protein kinases. The encoded protein contains a C-terminal caspase activation and recruitment domain (CARD), and is a component of signaling complexes in both the innate and adaptive immune pathways. It is a potent activator of NF-kappaB and inducer of apoptosis in response to various stimuli.
Synonyms:	CARD3; CARDIAK; CCK; GIG30; RICK; RIP-2; RIP2
Protein Families:	Druggable Genome, Protein Kinase



[View online »](#)

Protein Pathways: Neurotrophin signaling pathway, NOD-like receptor signaling pathway

### Product images:



Host: Rabbit  
Target Name: RIPK2  
Sample Type: Nerve Fiber Tumor Lysate  
Antibody Dilution: 1.0 $\mu$ g/ml

Host: Rabbit  
Target Name: RIPK2  
Sample Tissue: Human Nerve Fiber Tumor lysates  
Antibody Dilution: 1 $\mu$ g/ml