

## Product datasheet for **TA361222**

### MC3R Rabbit Polyclonal Antibody

#### Product data:

Product Type:	Primary Antibodies
Applications:	WB
Reactivity:	Human
Host:	Rabbit
Clonality:	Polyclonal
Immunogen:	The immunogen is a synthetic peptide directed towards the N terminal region of human MC3R
Specificity:	<b>Expected reactivity:</b> Human
Formulation:	Liquid. Purified antibody supplied in 1x PBS buffer with 0.09% (w/v) sodium azide and 2% sucrose. <i>Note that this product is shipped as lyophilized powder to China customers.</i>
Concentration:	lot specific
Purification:	Affinity purified
Conjugation:	Unconjugated
Storage:	For short term use, store at 2-8°C up to 1 week. For long term storage, store at -20°C in small aliquots to prevent freeze-thaw cycles.
Stability:	Shelf life: one year from despatch.
Predicted Protein Size:	35 kDa
Gene Name:	melanocortin 3 receptor
Database Link:	<a href="#">NP_063941.3</a> <a href="#">Entrez Gene 4159 Human P41968</a>
Background:	This gene encodes a G-protein-coupled receptor for melanocyte-stimulating hormone and adrenocorticotrophic hormone that is expressed in tissues other than the adrenal cortex and melanocytes. This gene maps to the same region as the locus for benign neonatal epilepsy. Mice deficient for this gene have increased fat mass despite decreased food intake, suggesting a role for this gene product in the regulation of energy homeostasis. Mutations in this gene are associated with a susceptibility to obesity in humans.



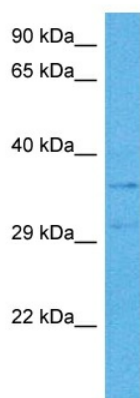
[View online »](#)

**Synonyms:** BMIQ9; MC3; MC3-R; OB20; OQTL

**Protein Families:** Druggable Genome, GPCR, Transmembrane

**Protein Pathways:** Neuroactive ligand-receptor interaction

### Product images:



Host: Rabbit  
Target Name: MC3R  
Sample Type: PANC1 Cell Lysate  
Antibody Dilution: 1.0 $\mu$ g/ml

Host: Rabbit  
Target Name: MC3R  
Sample Tissue: Human PANC1 Whole Cell lysates  
Antibody Dilution: 1 $\mu$ g/ml