

Product datasheet for **TA361221**

MFGE8 Rabbit Polyclonal Antibody

Product data:

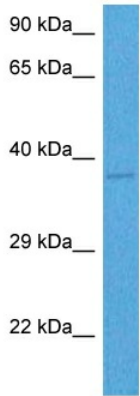
Product Type:	Primary Antibodies
Applications:	WB
Reactivity:	Human
Host:	Rabbit
Clonality:	Polyclonal
Immunogen:	The immunogen is a synthetic peptide directed towards the middle region of human MFGE8
Specificity:	Expected reactivity: Human
Formulation:	Liquid. Purified antibody supplied in 1x PBS buffer with 0.09% (w/v) sodium azide and 2% sucrose. <i>Note that this product is shipped as lyophilized powder to China customers.</i>
Concentration:	lot specific
Purification:	Affinity purified
Conjugation:	Unconjugated
Storage:	For short term use, store at 2-8°C up to 1 week. For long term storage, store at -20°C in small aliquots to prevent freeze-thaw cycles.
Stability:	Shelf life: one year from despatch.
Predicted Protein Size:	35 kDa
Gene Name:	milk fat globule-EGF factor 8 protein
Database Link:	NP_001108086.1 Entrez Gene 4240 Human Q08431-2
Background:	This gene encodes a preproprotein that is proteolytically processed to form multiple protein products. The major encoded protein product, lactadherin, is a membrane glycoprotein that promotes phagocytosis of apoptotic cells. This protein has also been implicated in wound healing, autoimmune disease, and cancer. Lactadherin can be further processed to form a smaller cleavage product, medin, which comprises the major protein component of aortic medial amyloid (AMA). Alternative splicing results in multiple transcript variants.



[View online »](#)

Synonyms:

BA46; EDIL1; HMFG; hP47; HsT19888; lactadherin; medin; MFG-E8; MFGM; OAcGD3S; SED1; SPAG10

Product images:

Host: Rabbit
Target Name: MFGE8
Sample Type: Thymus Tumor Lysate
Antibody Dilution: 1.0 μ g/ml

Host: Rabbit
Target Name: MFGE8
Sample Tissue: Human Thymus Tumor lysates
Antibody Dilution: 1 μ g/ml