

Product datasheet for **TA361216**

PRDM16 Rabbit Polyclonal Antibody

Product data:

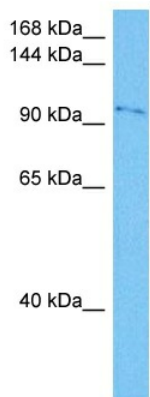
Product Type:	Primary Antibodies
Applications:	WB
Reactivity:	Human
Host:	Rabbit
Clonality:	Polyclonal
Immunogen:	The immunogen is a synthetic peptide directed towards the middle region of human PRDM16
Specificity:	Expected reactivity: Human
Formulation:	Liquid. Purified antibody supplied in 1x PBS buffer with 0.09% (w/v) sodium azide and 2% sucrose.
Concentration:	lot specific
Purification:	Affinity purified
Conjugation:	Unconjugated
Storage:	For short term use, store at 2-8°C up to 1 week. For long term storage, store at -20°C in small aliquots to prevent freeze-thaw cycles.
Stability:	Shelf life: one year from despatch.
Predicted Protein Size:	120 kDa
Gene Name:	PR domain 16
Database Link:	NP_071397.3 Entrez Gene 63976 Human Q9HAZ2-4
Background:	The reciprocal translocation t(1;3)(p36;q21) occurs in a subset of myelodysplastic syndrome (MDS) and acute myeloid leukemia (AML). This gene is located near the 1p36.3 breakpoint and has been shown to be specifically expressed in the t(1;3)(p36,q21)-positive MDS/AML. The protein encoded by this gene is a zinc finger transcription factor and contains an N-terminal PR domain. The translocation results in the overexpression of a truncated version of this protein that lacks the PR domain, which may play an important role in the pathogenesis of MDS and AML. Alternatively spliced transcript variants encoding distinct isoforms have been reported.



[View online »](#)

Synonyms: KIAA1675; MDS1/EVI1-like; MEL1; MGC166915; PFM13

Product images:



Host: Rabbit
Target Name: PRDM16
Sample Type: K562 Cell Lysate
Antibody Dilution: 1.0µg/ml

Host: Rabbit
Target Name: PRDM16
Sample Tissue: Human K562 Whole Cell lysates
Antibody Dilution: 1ug/ml