

Product datasheet for **TA361211**

ENT1 (SLC29A1) Rabbit Polyclonal Antibody

Product data:

Product Type:	Primary Antibodies
Applications:	WB
Reactivity:	Human
Host:	Rabbit
Clonality:	Polyclonal
Immunogen:	The immunogen is a synthetic peptide directed towards the N terminal region of Human SLC29A1
Specificity:	Expected reactivity: Human
Formulation:	Liquid. Purified antibody supplied in 1x PBS buffer with 0.09% (w/v) sodium azide and 2% sucrose. <i>Note that this product is shipped as lyophilized powder to China customers.</i>
Concentration:	lot specific
Purification:	Affinity purified
Conjugation:	Unconjugated
Storage:	For short term use, store at 2-8°C up to 1 week. For long term storage, store at -20°C in small aliquots to prevent freeze-thaw cycles.
Stability:	Shelf life: one year from despatch.
Predicted Protein Size:	58 kDa
Gene Name:	solute carrier family 29 member 1 (Augustine blood group)
Database Link:	NP_001071642.1 Entrez Gene 2030 Human Q99808-2



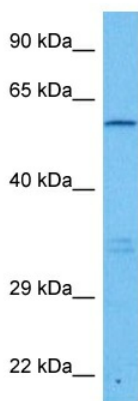
[View online »](#)

Background:

This gene is a member of the equilibrative nucleoside transporter family. The gene encodes a transmembrane glycoprotein that localizes to the plasma and mitochondrial membranes and mediates the cellular uptake of nucleosides from the surrounding medium. The protein is categorized as an equilibrative (as opposed to concentrative) transporter that is sensitive to inhibition by nitrobenzylthioinosine (NBMPR). Nucleoside transporters are required for nucleotide synthesis in cells that lack de novo nucleoside synthesis pathways, and are also necessary for the uptake of cytotoxic nucleosides used for cancer and viral chemotherapies. Multiple alternatively spliced variants, encoding the same protein, have been found for this gene.

Synonyms:

ENT1; MGC1465; MGC3778; OTTHUMP00000016509; OTTHUMP00000016510; OTTHUMP00000016511; OTTHUMP00000016512

Product images:

Host: Rabbit
Target Name: SLC29A1
Sample Type: COLO205 Cell Lysate
Antibody Dilution: 1.0µg/ml

Host: Rabbit
Target Name: SLC29A1
Sample Tissue: Human COLO205 Whole Cell lysates
Antibody Dilution: 1ug/ml