

Product datasheet for TA361203

EPS15 Rabbit Polyclonal Antibody

Product data:

Product Type:	Primary Antibodies
Applications:	WB
Reactivity:	Human
Host:	Rabbit
Clonality:	Polyclonal
Immunogen:	The immunogen is a synthetic peptide directed towards the C terminal region of human EPS15
Specificity:	Expected reactivity: Human
Formulation:	Liquid. Purified antibody supplied in 1x PBS buffer with 0.09% (w/v) sodium azide and 2% sucrose. <i>Note that this product is shipped as lyophilized powder to China customers.</i>
Concentration:	lot specific
Purification:	Affinity purified
Conjugation:	Unconjugated
Storage:	For short term use, store at 2–8°C up to 1 week. For long term storage, store at –20°C in small aliquots to prevent freeze–thaw cycles.
Stability:	Shelf life: one year from despatch.
Predicted Protein Size:	64 kDa
Gene Name:	epidermal growth factor receptor pathway substrate 15
Database Link:	NP_001153441.1 Entrez Gene 2060 Human P42566-2



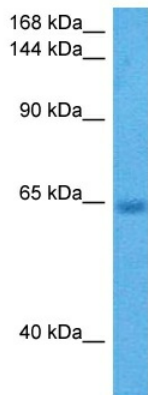
Background: This gene encodes a protein that is part of the EGFR pathway. The protein is present at clatherin-coated pits and is involved in receptor-mediated endocytosis of EGF. Notably, this gene is rearranged with the HRX/ALL/MLL gene in acute myelogenous leukemias. Alternative splicing results in multiple transcript variants encoding distinct isoforms.

Synonyms: AF-IP; AFIP; MLLT5

Protein Families: Druggable Genome

Protein Pathways: Endocytosis

Product images:



Host: Rabbit
Target Name: EPS15
Sample Type: Mesenchymoma Tumor Lysate
Antibody Dilution: 1.0µg/ml

Host: Rabbit
Target Name: EPS15
Sample Tissue: Human Mesenchymoma
Tumor lysates
Antibody Dilution: 1ug/ml