

## Product datasheet for **TA361202**

### CTSA Rabbit Polyclonal Antibody

#### Product data:

Product Type:	Primary Antibodies
Applications:	WB
Reactivity:	Human
Host:	Rabbit
Clonality:	Polyclonal
Immunogen:	The immunogen is a synthetic peptide directed towards the N terminal region of human CTSA
Specificity:	<b>Expected reactivity:</b> Human
Formulation:	Liquid. Purified antibody supplied in 1x PBS buffer with 0.09% (w/v) sodium azide and 2% sucrose. <i>Note that this product is shipped as lyophilized powder to China customers.</i>
Concentration:	lot specific
Purification:	Affinity purified
Conjugation:	Unconjugated
Storage:	For short term use, store at 2-8°C up to 1 week. For long term storage, store at -20°C in small aliquots to prevent freeze-thaw cycles.
Stability:	Shelf life: one year from despatch.
Predicted Protein Size:	54 kDa
Gene Name:	cathepsin A
Database Link:	<a href="#">NP_000299.2</a> <a href="#">Entrez Gene 5476 Human</a> <a href="#">P10619</a>
Background:	This gene encodes a member of the peptidase S10 family of serine carboxypeptidases. Alternative splicing results in multiple transcript variants, at least one of which encodes a preproprotein that is proteolytically processed to generate two chains that comprise the heterodimeric active enzyme. This enzyme possesses deamidase, esterase and carboxypeptidase activities and acts as a scaffold in the lysosomal multienzyme complex. Mutations in this gene are associated with galactosialidosis.
Synonyms:	GLB2; GSL; NGBE; OTTHUMP00000031779; PPCA; PPGB

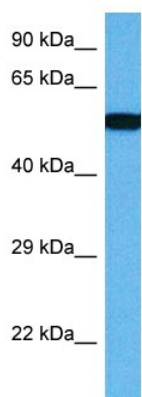


[View online »](#)

Protein Families: Druggable Genome, Protease

Protein Pathways: Renin-angiotensin system

### Product images:



Host: Rabbit

Target Name: CTSA

Sample Type: Leiomyosarcoma Tumor Lysate

Antibody Dilution: 1.0 $\mu$ g/ml

Host: Rabbit

Target Name: CTSA

Sample Tissue: Human Leiomyosarcoma Tumor lysates

Antibody Dilution: 1 $\mu$ g/ml