

## Product datasheet for **TA361184**

### Prolactin Receptor (PRLR) Rabbit Polyclonal Antibody

#### Product data:

Product Type:	Primary Antibodies
Applications:	WB
Reactivity:	Human
Host:	Rabbit
Clonality:	Polyclonal
Immunogen:	The immunogen is a synthetic peptide directed towards the C terminal region of human PRLR
Specificity:	<b>Expected reactivity:</b> Human
Formulation:	Liquid. Purified antibody supplied in 1x PBS buffer with 0.09% (w/v) sodium azide and 2% sucrose. <i>Note that this product is shipped as lyophilized powder to China customers.</i>
Concentration:	lot specific
Purification:	Affinity purified
Conjugation:	Unconjugated
Storage:	For short term use, store at 2-8°C up to 1 week. For long term storage, store at -20°C in small aliquots to prevent freeze-thaw cycles.
Stability:	Shelf life: one year from despatch.
Predicted Protein Size:	68 kDa
Gene Name:	prolactin receptor
Database Link:	<a href="#">NP_000940.1</a> <a href="#">Entrez Gene 5618 Human</a> <a href="#">P16471</a>
Background:	This gene encodes a receptor for the anterior pituitary hormone, prolactin, and belongs to the type I cytokine receptor family. Prolactin-dependent signaling occurs as the result of ligand-induced dimerization of the prolactin receptor. Several alternatively spliced transcript variants encoding different membrane-bound and soluble isoforms have been described for this gene, which may function to modulate the endocrine and autocrine effects of prolactin in normal tissue and cancer.
Synonyms:	hPRLrI; PRL-R

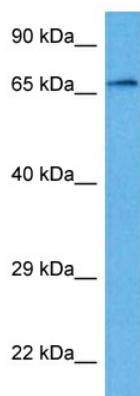


[View online »](#)

**Protein Families:** Druggable Genome, Transmembrane

**Protein Pathways:** Cytokine-cytokine receptor interaction, Jak-STAT signaling pathway, Neuroactive ligand-receptor interaction

### Product images:



Host: Rabbit  
Target Name: PRLR  
Sample Type: Jurkat Cell Lysate  
Antibody Dilution: 1.0 $\mu$ g/ml

Host: Rabbit  
Target Name: PRLR  
Sample Tissue: Human Jurkat Whole Cell lysates  
Antibody Dilution: 1 $\mu$ g/ml