

Product datasheet for **TA361179**

Collagen III (COL3A1) Rabbit Polyclonal Antibody

Product data:

Product Type:	Primary Antibodies
Applications:	WB
Reactivity:	Human
Host:	Rabbit
Clonality:	Polyclonal
Immunogen:	The immunogen is a synthetic peptide directed towards the N terminal region of human COL3A1
Specificity:	Expected reactivity: Human
Formulation:	Liquid. Purified antibody supplied in 1x PBS buffer with 0.09% (w/v) sodium azide and 2% sucrose. <i>Note that this product is shipped as lyophilized powder to China customers.</i>
Concentration:	lot specific
Purification:	Affinity purified
Conjugation:	Unconjugated
Storage:	For short term use, store at 2-8°C up to 1 week. For long term storage, store at -20°C in small aliquots to prevent freeze-thaw cycles.
Stability:	Shelf life: one year from despatch.
Predicted Protein Size:	161 kDa
Gene Name:	collagen type III alpha 1 chain
Database Link:	NP_000081.1 Entrez Gene 1281 Human P02461
Background:	This gene encodes the pro-alpha1 chains of type III collagen, a fibrillar collagen that is found in extensible connective tissues such as skin, lung, uterus, intestine and the vascular system, frequently in association with type I collagen. Mutations in this gene are associated with Ehlers-Danlos syndrome types IV, and with aortic and arterial aneurysms. Two transcripts, resulting from the use of alternate polyadenylation signals, have been identified for this gene.
Synonyms:	EDS4A; FLJ34534

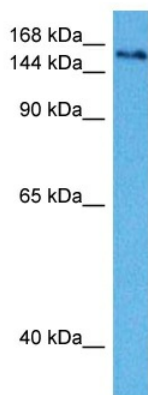


[View online »](#)

Protein Families: Druggable Genome

Protein Pathways: ECM-receptor interaction, Focal adhesion

Product images:



Host: Rabbit

Target Name: COL3A1

Sample Type: Mesenchymoma Tumor Lysate

Antibody Dilution: 1.0 μ g/ml

Host: Rabbit

Target Name: COL3A1

Sample Tissue: Human Mesenchymoma Tumor lysates

Antibody Dilution: 1 μ g/ml