

Product datasheet for **TA361159**

Calcium Sensing Receptor (CASR) Rabbit Polyclonal Antibody

Product data:

Product Type:	Primary Antibodies
Applications:	WB
Reactivity:	Human
Host:	Rabbit
Clonality:	Polyclonal
Immunogen:	The immunogen is a synthetic peptide directed towards the C terminal region of human CASR
Specificity:	Expected reactivity: Human
Formulation:	Liquid. Purified antibody supplied in 1x PBS buffer with 0.09% (w/v) sodium azide and 2% sucrose. <i>Note that this product is shipped as lyophilized powder to China customers.</i>
Concentration:	lot specific
Purification:	Affinity purified
Conjugation:	Unconjugated
Storage:	For short term use, store at 2-8°C up to 1 week. For long term storage, store at -20°C in small aliquots to prevent freeze-thaw cycles.
Stability:	Shelf life: one year from despatch.
Predicted Protein Size:	118 kDa
Gene Name:	calcium sensing receptor
Database Link:	NP_000379.2 Entrez Gene 846 Human P41180
Background:	The protein encoded by this gene is a G protein-coupled receptor that is expressed in the parathyroid hormone (PTH)-producing chief cells of the parathyroid gland, and the cells lining the kidney tubule. It senses small changes in circulating calcium concentration and couples this information to intracellular signaling pathways that modify PTH secretion or renal cation handling, thus this protein plays an essential role in maintaining mineral ion homeostasis. Mutations in this gene cause familial hypocalciuric hypercalcemia, familial, isolated hyperparathyroidism, and neonatal severe primary hyperparathyroidism.

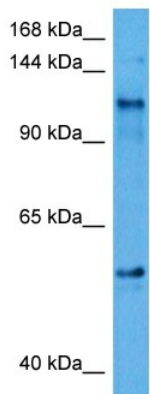


[View online »](#)

Synonyms: CAR; EIG8; FHH; FIH; GPRC2A; HHC; HHC1; MGC138441; NSHPT; PCAR1

Protein Families: Druggable Genome, GPCR, Transmembrane

Product images:



Host: Rabbit
Target Name: CASR
Sample Type: HepG2 Cell Lysate
Antibody Dilution: 1.0 μ g/ml

Host: Rabbit
Target Name: CASR
Sample Tissue: Human HepG2 Whole Cell lysates
Antibody Dilution: 1 μ g/ml