

Product datasheet for **TA361152**

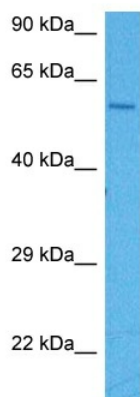
BPI Rabbit Polyclonal Antibody

Product data:

Product Type:	Primary Antibodies
Applications:	WB
Reactivity:	Human
Host:	Rabbit
Clonality:	Polyclonal
Immunogen:	The immunogen is a synthetic peptide directed towards the middle region of human BPI
Specificity:	Expected reactivity: Human
Formulation:	Liquid. Purified antibody supplied in 1x PBS buffer with 0.09% (w/v) sodium azide and 2% sucrose. <i>Note that this product is shipped as lyophilized powder to China customers.</i>
Concentration:	lot specific
Purification:	Affinity purified
Conjugation:	Unconjugated
Storage:	For short term use, store at 2-8°C up to 1 week. For long term storage, store at -20°C in small aliquots to prevent freeze-thaw cycles.
Stability:	Shelf life: one year from despatch.
Predicted Protein Size:	53 kDa
Gene Name:	bactericidal/permeability-increasing protein
Database Link:	NP_001716.2 Entrez Gene 671 Human P17213
Background:	This gene encodes a lipopolysaccharide binding protein. It is associated with human neutrophil granules and has antimicrobial activity against gram-negative organisms.
Synonyms:	BPI
Protein Families:	Druggable Genome, Transmembrane



[View online »](#)

Product images:

Host: Rabbit
Target Name: BPI
Sample Type: HeLa Cell Lysate
Antibody Dilution: 1.0µg/ml

Host: Rabbit
Target Name: BPI
Sample Tissue: Human HeLa Whole Cell lysates
Antibody Dilution: 1 ug/ml