

Product datasheet for **TA361151**

ST3GAL6 Rabbit Polyclonal Antibody

Product data:

Product Type:	Primary Antibodies
Applications:	WB
Reactivity:	Human
Host:	Rabbit
Clonality:	Polyclonal
Immunogen:	The immunogen is a synthetic peptide directed towards the middle region of human ST3GAL6
Specificity:	Expected reactivity: Human
Formulation:	Liquid. Purified antibody supplied in 1x PBS buffer with 0.09% (w/v) sodium azide and 2% sucrose. <i>Note that this product is shipped as lyophilized powder to China customers.</i>
Concentration:	lot specific
Purification:	Affinity purified
Conjugation:	Unconjugated
Storage:	For short term use, store at 2-8°C up to 1 week. For long term storage, store at -20°C in small aliquots to prevent freeze-thaw cycles.
Stability:	Shelf life: one year from despatch.
Predicted Protein Size:	36 kDa
Gene Name:	ST3 beta-galactoside alpha-2,3-sialyltransferase 6
Database Link:	NP_001258074.1 Entrez Gene 10402 Human Q9Y274



[View online »](#)

Background:

The protein encoded by this gene is a member of the sialyltransferase family. Members of this family are enzymes that transfer sialic acid from the activated cytidine 5'-monophospho-N-acetylneuraminic acid to terminal positions on sialylated glycolipids (gangliosides) or to the N- or O-linked sugar chains of glycoproteins. This protein has high specificity for neolactotetraosylceramide and neolactoheptaosylceramide as glycolipid substrates and may contribute to the formation of selectin ligands and sialyl Lewis X, a carbohydrate important for cell-to-cell recognition and a blood group antigen. Alternative splicing results in multiple transcript variants that encode different protein isoforms.

Synonyms:

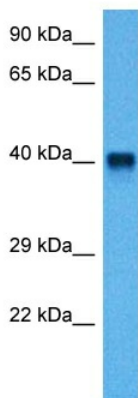
alpha2,3-sialyltransferase; SIAT10; ST3GALVI

Protein Families:

Transmembrane

Protein Pathways:

Glycosphingolipid biosynthesis - lacto and neolacto series, Metabolic pathways

Product images:

Host: Rabbit
Target Name: ST3GAL6
Sample Type: Lung Tumor Lysate
Antibody Dilution: 1.0µg/ml

Host: Rabbit
Target Name: ST3GAL6
Sample Tissue: Human Lung Tumor lysates
Antibody Dilution: 1ug/ml